

PRE-ORDER
catalog.

3

2

0

2



 **MANERA**
M A N E R A . C O M

SUMMARY

01

NEOPRENE ⁴

OVERVIEW /4 - ALT /5 - MAGMA /7 - X10D /10 - SEAFARER /12
THICKNESS REPARTITION /18

02

NEOPRENE
ACCESSORIES ¹⁹

OVERVIEW /19 - BASELAYERS, TOP NEO /20 - HOOD, CAPS /21
BOOTS /22 - GLOVES /23

03

HARNESS ²⁴

OVERVIEW /24 - HOW TO CHOOSE /25 - HALO /26 - SIZE GUIDE /33
HARNESS ACCESSORIES /34 - ECLIPSE /35 - EXO 2.0 /37

04

BOARDBAGS ³⁹

OVERVIEW /39 - DAYBAGS /40 - TRAVELBAGS /41
FOILBAGS /42 - BACKPACKS /43

04

WATERWEAR
& PROTECTIONS ⁴⁴

OVERVIEW /44 - WATERWEAR /45 - PROTECTIONS /47
LEASHS /48

05

BOARDSHORTS ⁴⁹

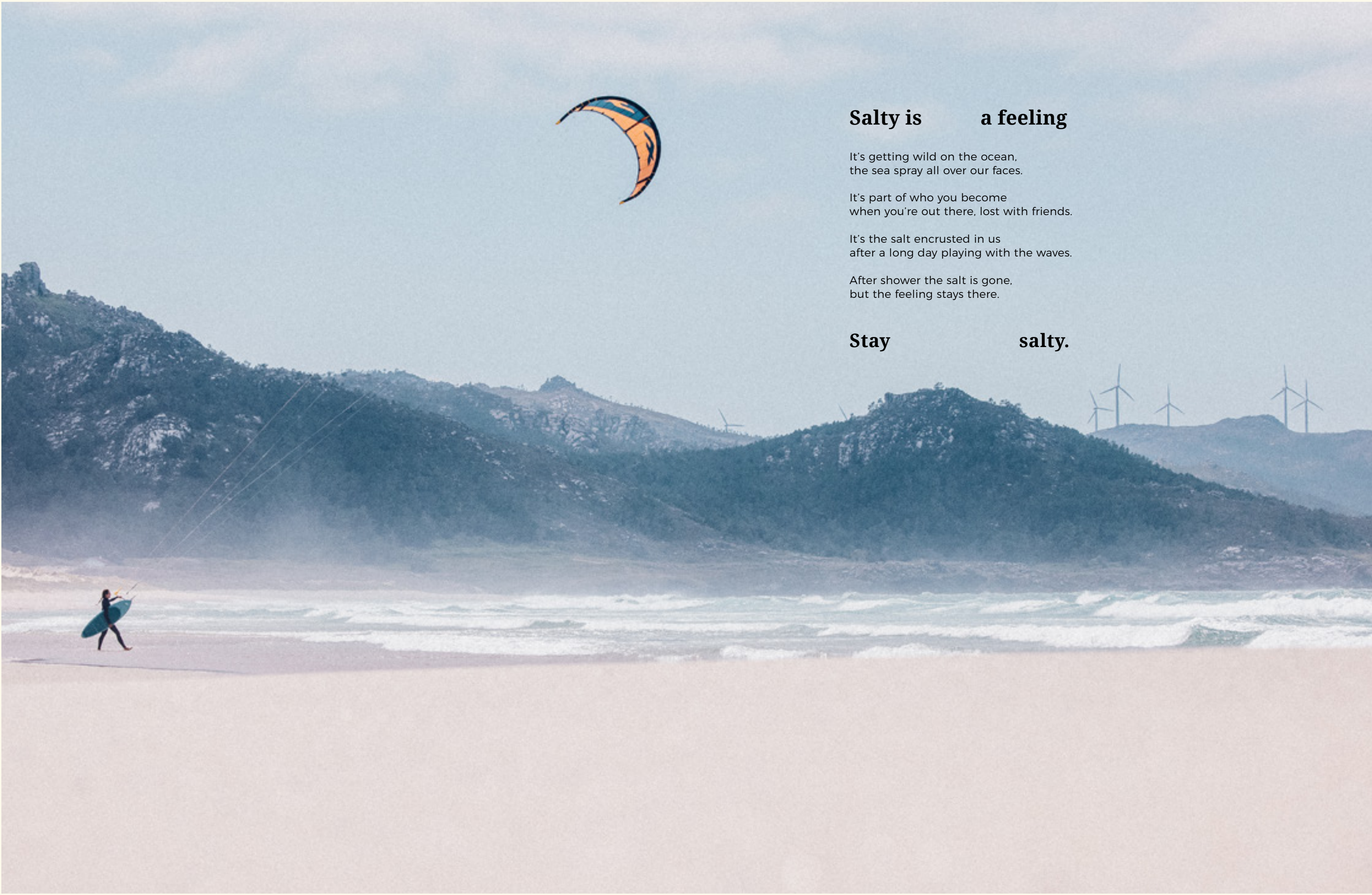
OVERVIEW /49 - SQUARFLEX /50 - HAAPITI /51 - GAMBAS /51

06

APPAREL ⁵²

OVERVIEW /52

OUR STORY ⁵³



Salty is a feeling

It's getting wild on the ocean,
the sea spray all over our faces.

It's part of who you become
when you're out there, lost with friends.

It's the salt encrusted in us
after a long day playing with the waves.

After shower the salt is gone,
but the feeling stays there.

Stay salty.

NEOPRENE
OVERVIEW

Men

Women

NEW
MAGMA



6.4



5.4.3



5.4.3

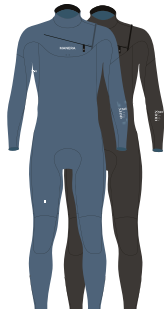


4.3

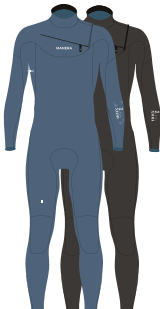
X10D



4.3



5.4.3



4.3



3.2

MAGMA HD- FZ
Ref. 22231-0100
Colors. BLACK

MAGMA HD- FZ
Ref. 22231-0101
Colors. BLACK

MAGMA - FZ
Ref. 22231-0102
Colors. BLACK

MAGMA - FZ
Ref. 22231-0103
Colors. BLACK

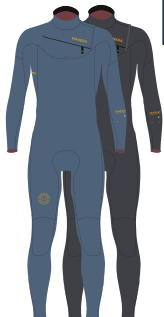
X10D HD- FZ
Ref. 22221-0201
Colors. BLACK

X10D - FZ
Ref. 22221-0202
Colors. PEWTER / BLACK

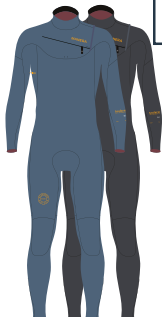
X10D - FZ
Ref. 22221-0203
Colors. PEWTER / BLACK

X10D - FZ
Ref. 22221-0204
Colors. BLACK

SEAFARER



5.3



4.3



3.2



2.2



3.2

SEAFARER - FZ
Ref. 22221-0302
Colors. PEWTER / ANTHRACITE

SEAFARER - FZ
Ref. 22221-0303
Colors. PEWTER / ANTHRACITE

SEAFARER - FZ
Ref. 22221-0304
Colors. ANTHRACITE

SEAFARER - FZ
Ref. 22221-0306
Colors. ANTHRACITE

SEAFARER - FZ
Ref. 22221-0305
Colors. ANTHRACITE



5.3



4.3



3.2

SEAFARER - BZ
Ref. 22221-0502
Colors. ANTHRACITE

SEAFARER - BZ
Ref. 22221-0503
Colors. ANTHRACITE

SEAFARER - BZ
Ref. 22221-0504
Colors. ANTHRACITE

ALT

NEW



5.4.3



4.3

ALT - FZ
Ref. 22231-0192
Colors. BLACK

ALT - FZ
Ref. 22231-0193
Colors. BLACK

NEW
MAGMA



6.4



5.4.3



5.4.3



4.3

MAGMA HD- FZ
Ref. 22231-1000
Colors. BLACK

MAGMA HD- FZ
Ref. 22231-1001
Colors. BLACK

MAGMA - FZ
Ref. 22231-1002
Colors. BLACK

MAGMA - FZ
Ref. 22231-1003
Colors. BLACK

SEAFARER



5.3



4.3



3.2

SEAFARER - FZ
Ref. 22221-3002
Colors. ANTHRACITE

SEAFARER - FZ
Ref. 22221-3003
Colors. PEWTER

SEAFARER - FZ
Ref. 22221-3004
Colors. PEWTER



5.3



4.3



3.2

SEAFARER - BZ
Ref. 22221-5002
Colors. ANTHRACITE

SEAFARER - BZ
Ref. 22221-5003
Colors. PEWTER

SEAFARER - BZ
Ref. 22221-5004
Colors. PEWTER



3.2



2.0

SEAFARER - FZ
Ref. 22221-5002
Colors. PEWTER

BIKISUIT - FZ
Ref. 22221-5002
Colors. BLACK

MEN SIZES

FZ XS-S-St-Ms-M-Mt-Ls-L-XL-XXL

BZ XS-S-M-ML-L-XL

WOMEN SIZES

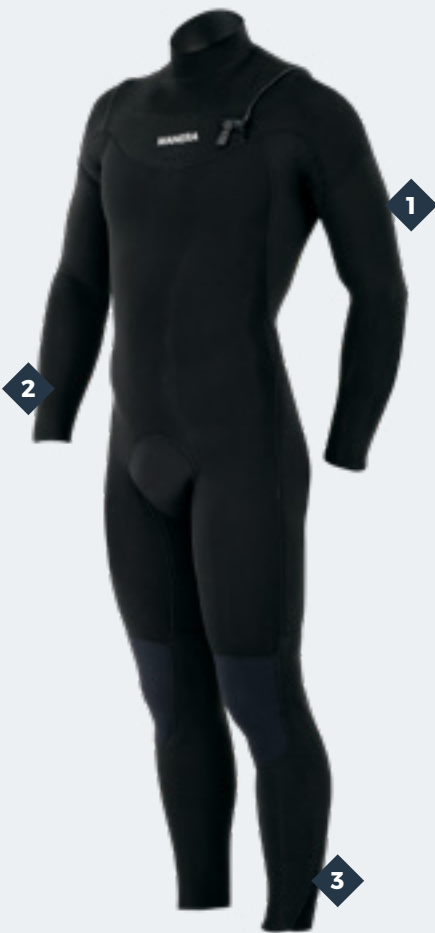
XS-S-M-L-XL

Performance & sustainability



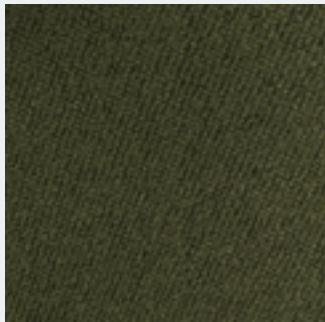
DESIGNED IN 3D

We use computer design to model good-fitted wetsuits in 3D, then we employ an innovative software that converts it into a precise 2D pattern for the factory.



ALT
KEY FEATURES
NEW

Materials



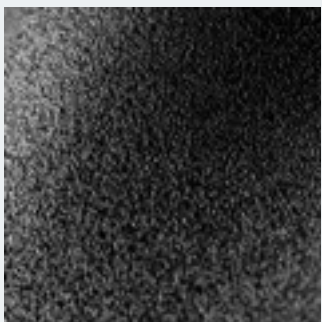
RECYCLED
MAGMA

- RECYCLED MAGMA**
- 45% Recycled polyester
 - 47% nano bamboo charcoal polyester,
 - 8% Spandex



RECYCLED
REFLEX SKIN

- RECYCLED REFLEX SKIN**
- 83% Recycled Nylon
 - 17% Spandex



YULEX

- YULEX NATURAL FOAM**
- Taped from Hevea trees
 - Certified FSC forests

Technologies



- 1 SD² TAPE**
- Triple glued / Blind stitched / Inside tape welded by an air heater machine
 - New material brings more durability & Flex
 - 100% waterproof



- 2 SEALING PRINT**
- Keep the water away
 - Keep legs & arms panels in place



- 3 WATER STRAINER**
- Drains the water out of the leg
 - Continue the session in the best possible conditions

CHARACTERISTICS

ALT stands for « Alternative ». We have built a greener alternative to conventional wetsuits, with performance in mind. It features a 100% natural YULEX rubber and recycled jerseys besides our standard sustainable processes. We believe the ALT represents a new generation of high-performance wetsuits that has a more reasonable impact on the planet.





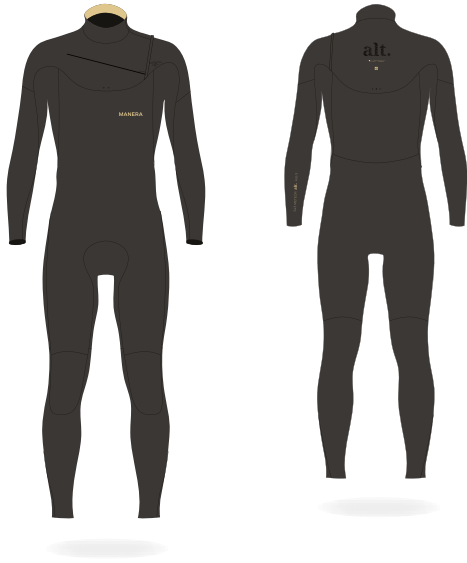
Alt.



Men

3
2
0
2

NEW



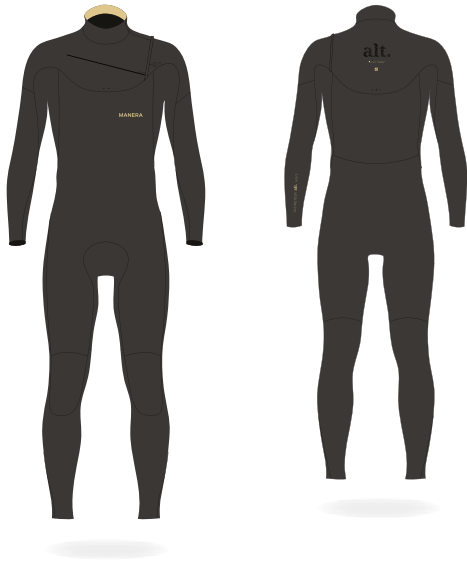
ALT
FRONTZIP

5.3

DETAILS

REF.	22231-1902
SIZING.	XS-S-St-Ms-M-Mt-Ls-L-XL-XXL
COLORS.	BLACK

FLEXIBILITY	95%
WARMTH	85%
COMFORT	100%



ALT
FRONTZIP

4.3

DETAILS

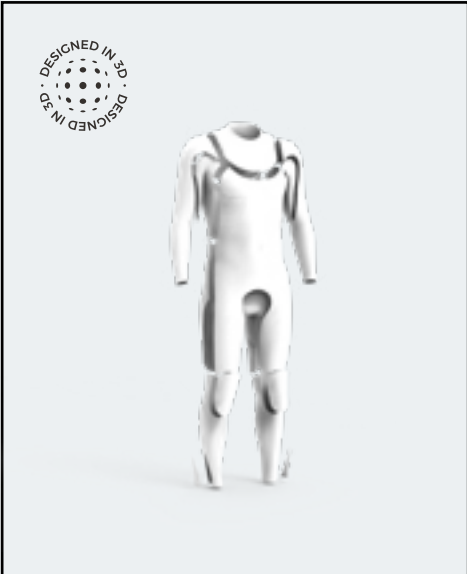
REF.	22231-1903
SIZING.	XS-S-St-Ms-M-Mt-Ls-L-XL-XXL
COLORS.	BLACK

FLEXIBILITY	100%
WARMTH	80%
COMFORT	100%

Warmth & comfort

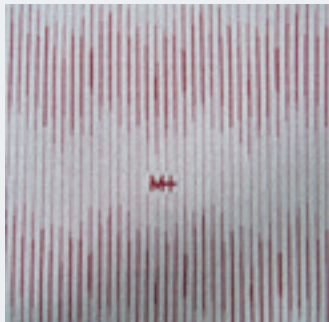
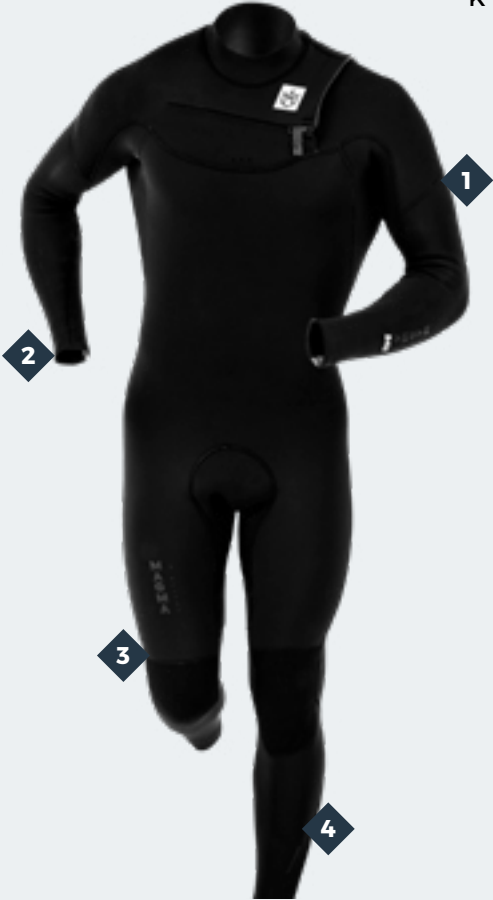
MAGMA

KEY FEATURES



DESIGNED IN 3D

We use computer design to model good-fitted wetsuits in 3D, then we employ an innovative software that converts it into a precise 2D pattern for the factory.



NEW

M+

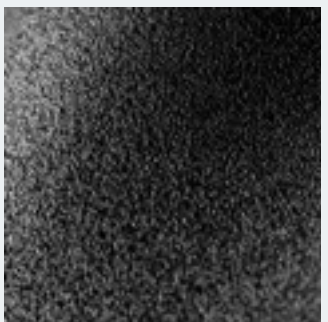
MAGMA+ FLEECE

- New generation of thermal materials that insulates & keep you warm
- Best drying time on the market
- Lighter than a classic fleece



REFLEX SKIN

- Best stretch of the market
- Durable: Tear resistant, UV resistant

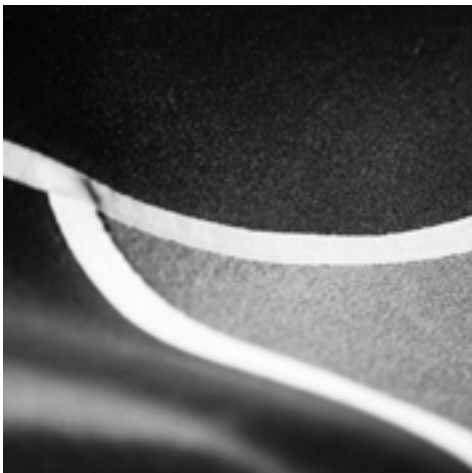


AIRFOAM
NEOPRENE

AIRFOAM

- Made to be light, improving comfort & endurance
- Best flex & insulation on the market
- Quilted touch

Technologies



1 SD² TAPE II

- Triple glued / Blind stitched / Inside tape welded by an air heater machine
- New material brings more durability & Flex
- 100% waterproof



2 SEALING PRINT

- Keep the water away
- Keep legs & arms panels in place



3 BACK KNEE EMBOSS

- Helps the neoprene to bend more naturally
- Greater comfort during flexion



4 WATER STRAINER

- Drains the water out of the leg
- Continue the session in the best possible conditions



Magma.



Men

3
2
0
2

M+
NEW



MAGMA
HOODED - FRONT ZIP 6.4

DETAILS	
REF.	22231-0100
SIZING.	XS-S-St-Ms-M-Mt-Ls-L-XL-XXL
COLORS.	BLACK

FLEXIBILITY	80%
WARMTH	110%
COMFORT	100%



MAGMA
FRONT ZIP 5.4.3

DETAILS	
REF.	22231-0102
SIZING.	XS-S-St-Ms-M-Mt-Ls-L-XL-XXL
COLORS.	BLACK

FLEXIBILITY	90%
WARMTH	90%
COMFORT	100%



MAGMA
HOODED - FRONT ZIP 5.4.3

DETAILS	
REF.	22231-0101
SIZING.	XS-S-St-Ms-M-Mt-Ls-L-XL-XXL
COLORS.	BLACK

FLEXIBILITY	85%
WARMTH	100%
COMFORT	100%



MAGMA
FRONT ZIP 4.3

DETAILS	
REF.	22231-0103
SIZING.	XS-S-St-Ms-M-Mt-Ls-L-XL-XXL
COLORS.	BLACK

FLEXIBILITY	95%
WARMTH	90%
COMFORT	100%

Warmth & comfort



Magma.



Women

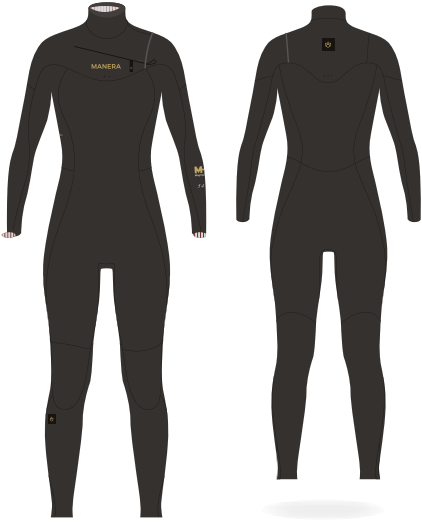
3
2
0
2

MT
NEW



MAGMA
HOODED - FRONT ZIP 6.4

DETAILS	
REF.	22231-1000
SIZING.	XS-S-M-ML-L-XL-XXL
COLORS.	BLACK
FLEXIBILITY	80%
WARMTH	110%
COMFORT	100%



MAGMA
FRONTZIP 5.4.3

DETAILS	
REF.	22231-1002
SIZING.	XS-S-M-L-XL
COLORS.	BLACK
FLEXIBILITY	90%
WARMTH	95%
COMFORT	100%



MAGMA
HOODED - FRONT ZIP 5.4.3

DETAILS	
REF.	22231-1001
SIZING.	XS-S-M-ML-L-XL-XXL
COLORS.	BLACK
FLEXIBILITY	85%
WARMTH	100%
COMFORT	100%




MAGMA
FRONTZIP 4.3

DETAILS	
REF.	22231-1003
SIZING.	XS-S-M-L-XL
COLORS.	BLACK
FLEXIBILITY	95%
WARMTH	90%
COMFORT	100%

Warmth & comfort

Stretch & light

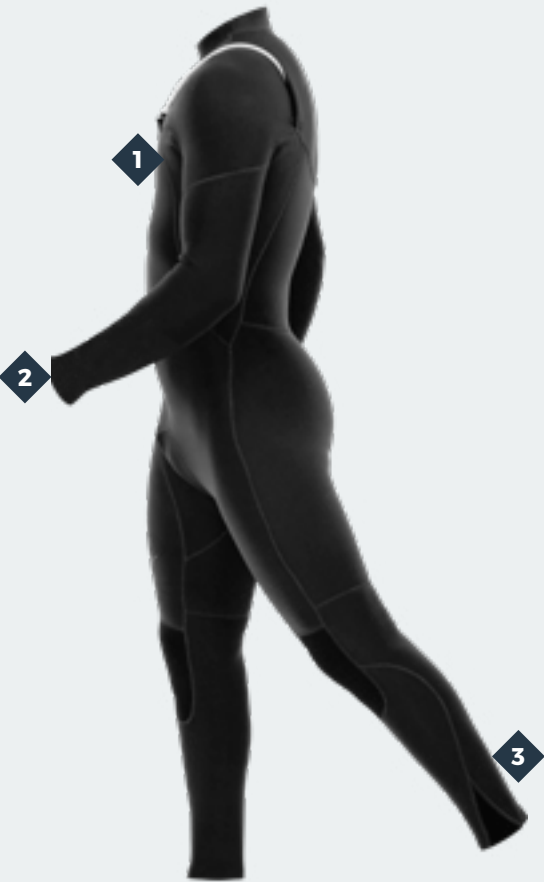


DESIGNED IN 3D

We use computer design to model good-fitted wetsuits in 3D, then we employ an innovative software that converts it into a precise 2D pattern for the factory.

X10D

KEY FEATURES



Materials



X10D⁺
FLEECE

X10D PLUS

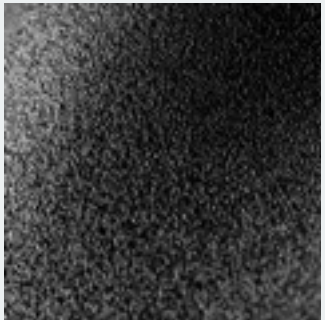
- Plush loops work as insulators & heat generators
- Smooth, soft & comfy feeling against the skin
- Dries fast



REFLEX
SKIN

REFLEX SKIN

- Best stretch of the market
- Durable: Tear resistant, UV resistant

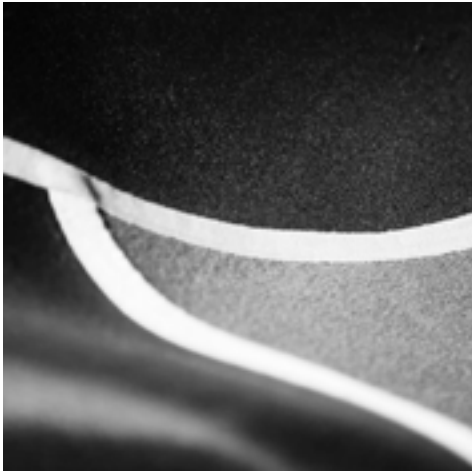


AIRFOAM
NEOPRENE

AIRFOAM

- Made to be light, improving comfort & endurance
- Best flex & insulation on the market
- Quilted touch

Technologies



SD² TAPE II
STRONGER. MORE DURABLE.

- 1**
- SD² TAPE II**

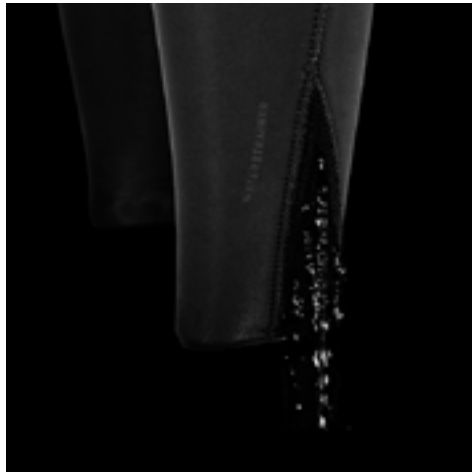
 - Triple glued / Blind stitched / Inside tape welded by an air heater machine
 - New material brings more durability & Flex
 - 100% waterproof



SEALING
PRINT

- 2**
- SEALING PRINT**

 - Keep the water away
 - Keep legs & arms panels in place



WATER STRAINER

- 3**
- WATER STRAINER**

 - Drains the water out of the leg
 - Continue the session in the best possible conditions

CHARACTERISTICS

The Meteor X10D is the ultimate performance wetsuit. In addition to excellent thermal protection, the X10D fleece interior gives flexibility and lightness while providing great comfort.

If you are looking for lightness and freedom of movement, this is the wetsuit you need.



X10D.



Men



X10D
HOODED - FRONT ZIP

4.3

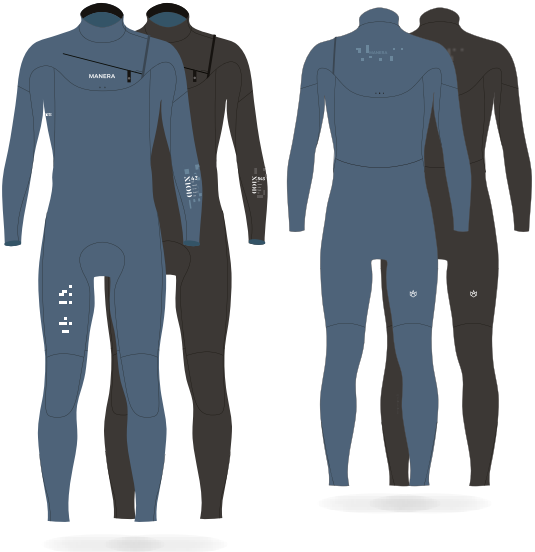
DETAILS	
REF.	22221-0201
SIZING.	XS-S-St-Ms-M-Mt-Ls-L-XL-XXL
COLORS.	BLACK
FLEXIBILITY	100%
WARMTH	90%
COMFORT	100%



X10D
FRONTZIP

5.4.3

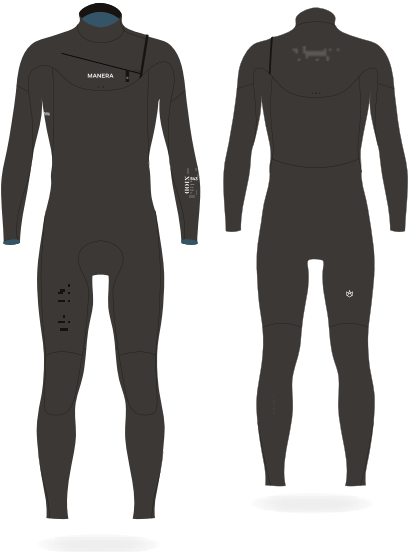
DETAILS	
REF.	22221-0202
SIZING.	XS-S-St-Ms-M-Mt-Ls-L-XL-XXL
COLORS.	PEWTER / BLACK
FLEXIBILITY	95%
WARMTH	85%
COMFORT	100%



X10D
FRONTZIP

4.3

DETAILS	
REF.	22221-0203
SIZING.	XS-S-St-Ms-M-Mt-Ls-L-XL-XXL
COLORS.	PEWTER / BLACK
FLEXIBILITY	100%
WARMTH	80%
COMFORT	100%



X10D
FRONTZIP

3.2

DETAILS	
REF.	22221-0204
SIZING.	XS-S-St-Ms-M-Mt-Ls-L-XL-XXL
COLORS.	PEWTER / BLACK
FLEXIBILITY	100%
WARMTH	75%
COMFORT	100%

Back to basics

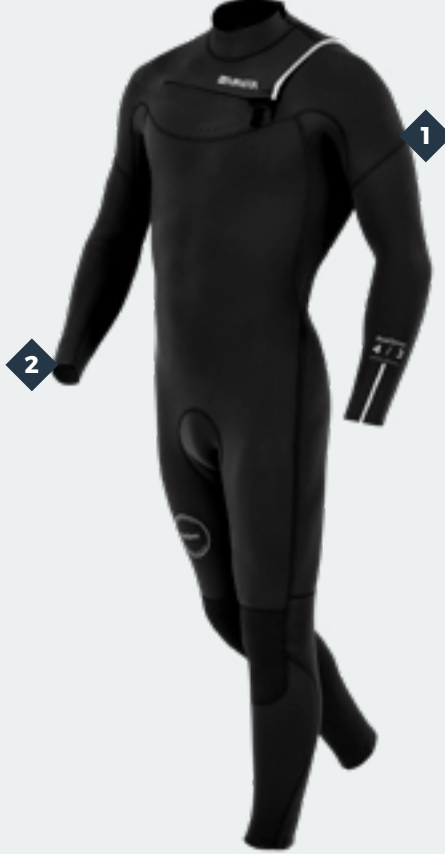
SEAFARER

KEY FEATURES



DESIGNED IN 3D

We use computer design to model good-fitted wetsuits in 3D, then we employ an innovative software that converts it into a precise 2D pattern for the factory.



Materials



X10D⁺
FLEECE

X10D PLUS

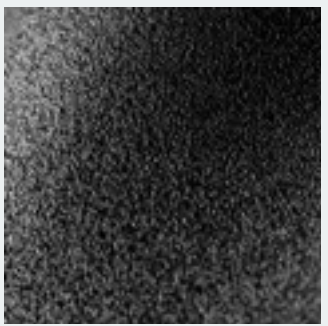
- Plush loops work as insulators & heat generators
- Smooth, soft & comfy feeling against the skin
- Dries fast



REFLEX
SKIN

REFLEX SKIN

- Best stretch of the market
- Durable: Tear resistant, UV resistant



S-FOAM

S-FOAM

- Made from Limestone
- Best flexibility, heat & durability ratio on the market

Technologies



GBS
SEAMS

1 GBS SEAMS

- Neoprene glued together & blind-stitched
- High level of flexibility
- 100% waterproof



SEALING
PRINT

2 SEALING PRINT

- Keep the water away
- Keep legs & arms panels in place

CHARACTERISTICS

The SEAFARER brings us back to the essentials of what makes a good wetsuit, nothing more, nothing less: warmth, comfort, durability. It's a no-bullshit wetsuit, with a good fit and finished with high-quality materials.

If you are looking for a high-performance wetsuit at an affordable price, this is the perfect model.



Seafarer.



Men

3
2
0
2

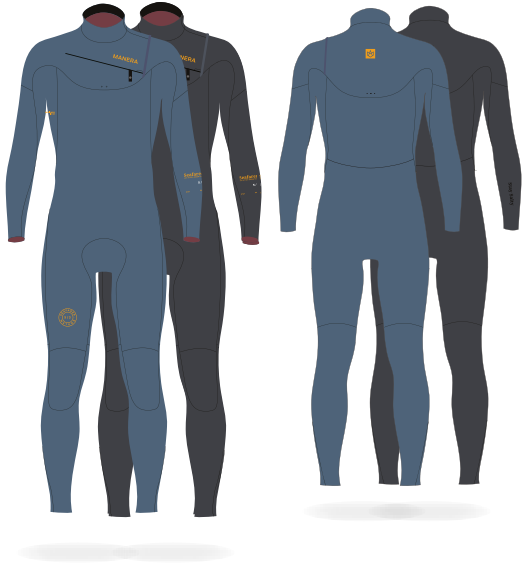


SEAFARER FRONTZIP

5.3

DETAILS	
REF.	22W221-0302
SIZING.	XS-S-St-Ms-M-Mt-Ls-L-XL-XXL
COLORS.	PEWTER / ANTHRACITE

FLEXIBILITY	90%
WARMTH	80%
COMFORT	95%



SEAFARER FRONTZIP

4.3

DETAILS	
REF.	22221-0303
SIZING.	XS-S-St-Ms-M-Mt-Ls-L-XL-XXL
COLORS.	PEWTER / ANTHRACITE

FLEXIBILITY	95%
WARMTH	75%
COMFORT	95%



SEAFARER
FRONTZIP

3.2

DETAILS

REF.	22221-0304
SIZING.	XS-S-St-Ms-M-Mt-Ls-L-XL-XXL
COLORS.	ANTHRACITE

FLEXIBILITY	100%
WARMTH	70%
COMFORT	95%



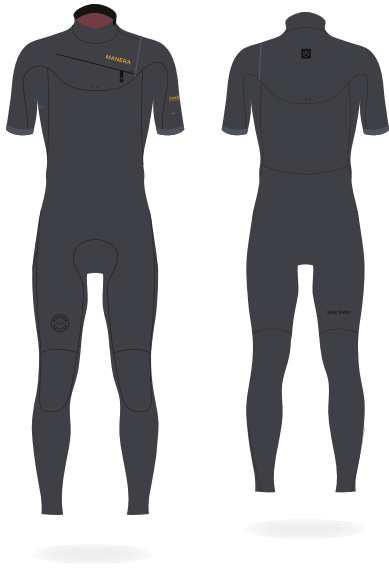
SEAFARER
HYBRID - FRONTZIP

3.2

DETAILS

REF.	22221-0305
SIZING.	XS-S-St-Ms-M-Mt-Ls-L-XL-XXL
COLORS.	ANTHRACITE

FLEXIBILITY	100%
WARMTH	65%
COMFORT	100%



SEAFARER
HYBRID - FRONTZIP

2.2

DETAILS

REF.	22221-0306
SIZING.	XS-S-St-Ms-M-Mt-Ls-L-XL-XXL
COLORS.	ANTHRACITE

FLEXIBILITY	100%
WARMTH	65%
COMFORT	100%





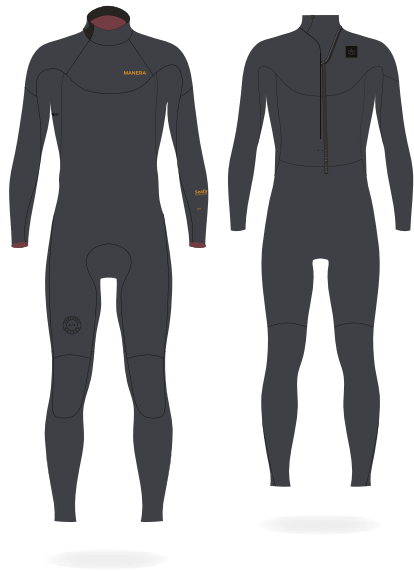
SEAFARER
BACKZIP

5.3

DETAILS

REF.	22221-0502
SIZING.	XS-S-M-ML-L-XL-XXL
COLORS.	ANTHRACITE

FLEXIBILITY	90%
WARMTH	80%
COMFORT	95%



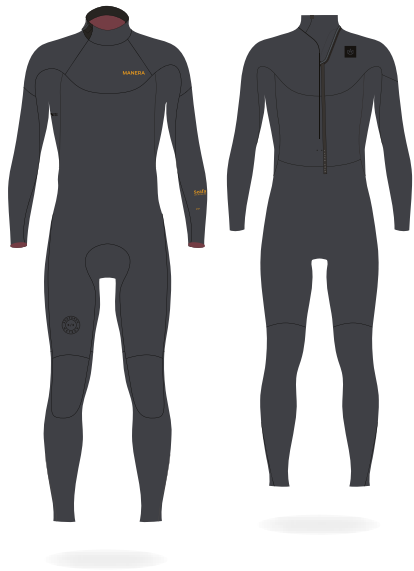
SEAFARER
BACKZIP

4.3

DETAILS

REF.	22221-0503
SIZING.	XS-S-M-ML-L-XL-XXL
COLORS.	ANTHRACITE

FLEXIBILITY	95%
WARMTH	75%
COMFORT	95%



SEAFARER
BACKZIP

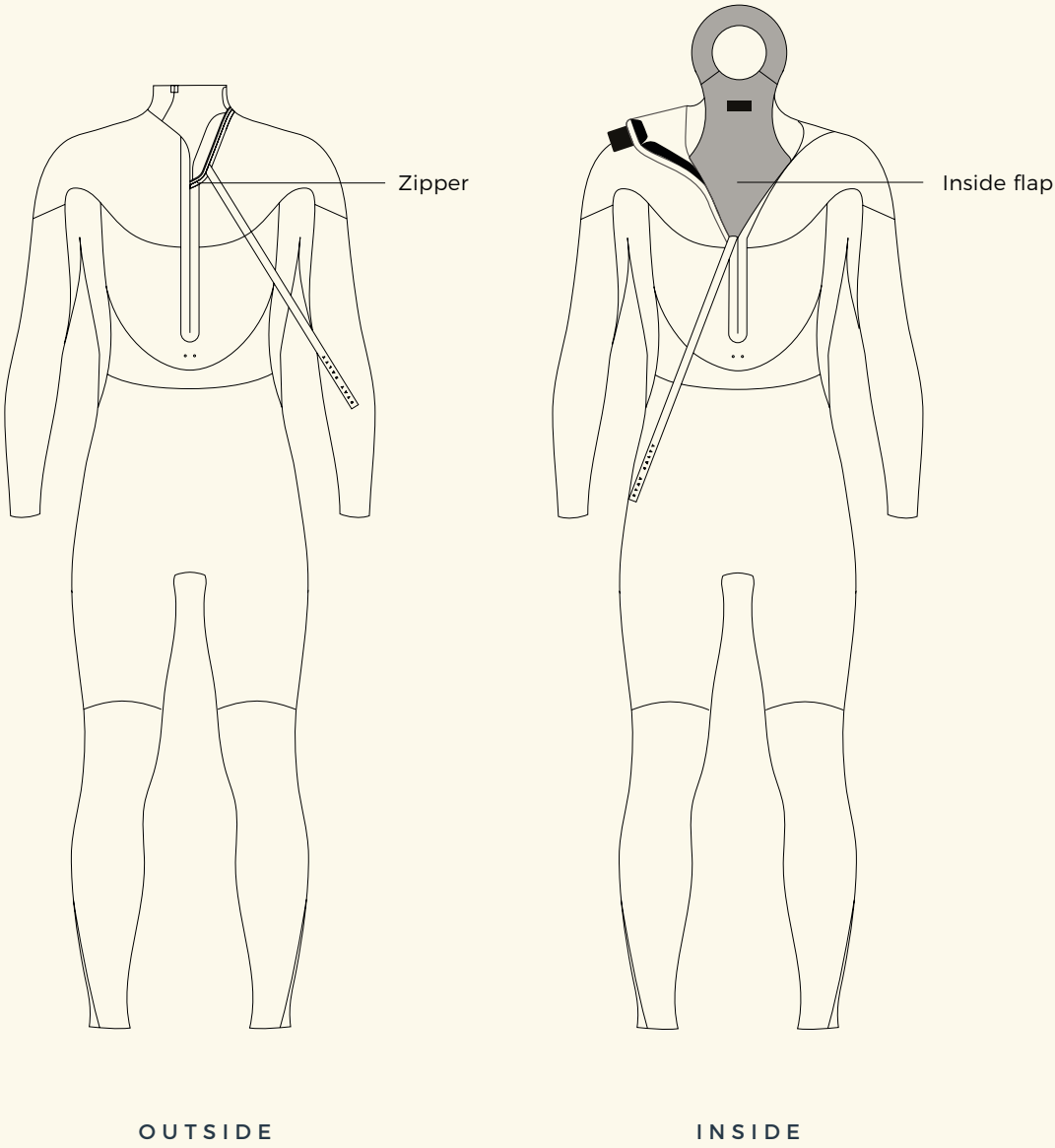
3.2

DETAILS

REF.	22221-0504
SIZING.	XS-S-M-ML-L-XL-XXL
COLORS.	ANTHRACITE

FLEXIBILITY	100%
WARMTH	70%
COMFORT	95%

KEY FEATURES
BACK ZIP



- CHARACTERITCS**
- We use a PK 8mm zip built in high quality nylon, it is a short zip (30cm) in order to maximize the back flexibility.
 - An inside flap covers the back and goes around the neck, it protects the back from the outside zipper and allows a perfect waterproofness. It also adds a few millimeters of thickness to an area that is very exposed to wind.

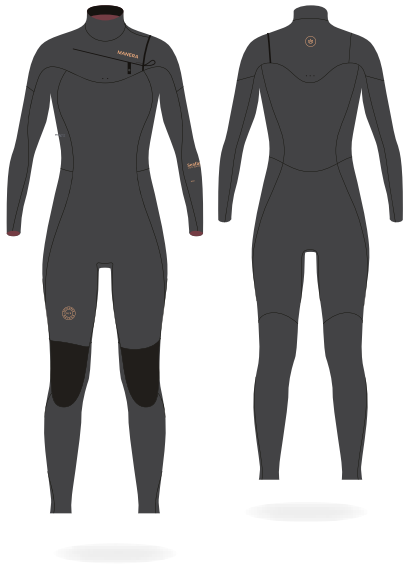


Seafarer.



Women

3
2
0
2

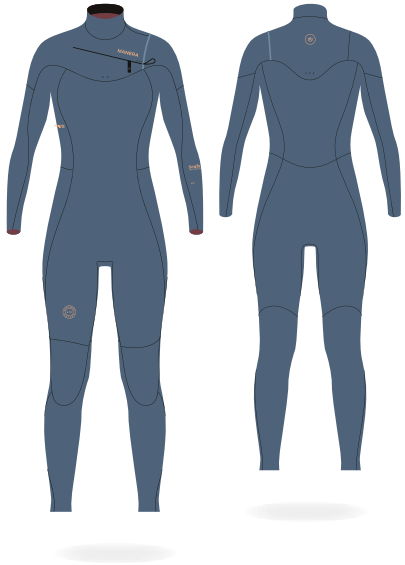


SEAFARER FRONTZIP

5.3

DETAILS	
REF.	22221-3002
SIZING.	XS-S-M-L-XL
COLORS.	ANTHRACITE

FLEXIBILITY	90%
WARMTH	80%
COMFORT	95%

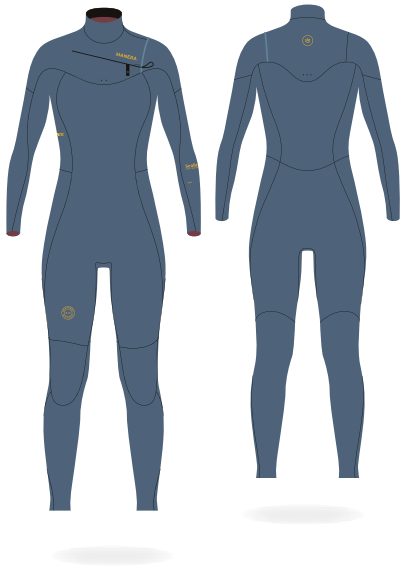


SEAFARER FRONTZIP

4.3

DETAILS	
REF.	22221-3003
SIZING.	XS-S-M-L-XL
COLORS.	PEWTER

FLEXIBILITY	95%
WARMTH	75%
COMFORT	95%



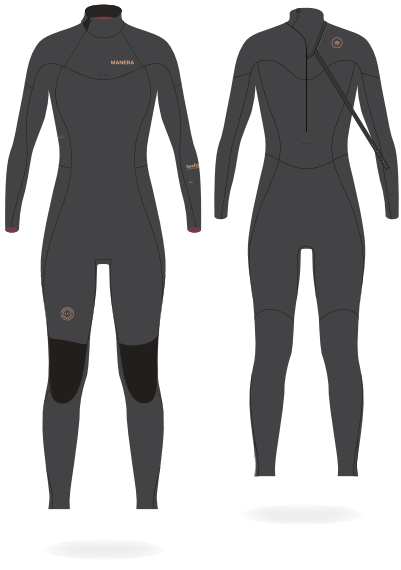
SEAFARER
FRONTZIP

3.2

DETAILS

REF.	22221-3004
SIZING.	XS-S-M-L-XL
COLORS.	PEWTER

FLEXIBILITY	100%
WARMTH	70%
COMFORT	95%



SEAFARER
BACKZIP

5.3

DETAILS

REF.	22221-5002
SIZING.	XS-S-M-L-XL
COLORS.	ANTHRACITE

FLEXIBILITY	90%
WARMTH	80%
COMFORT	95%



SEAFARER
HYBRID - FRONTZIP

3.2

DETAILS

REF.	22221-3005
SIZING.	XS-S-M-L-XL
COLORS.	PEWTER

FLEXIBILITY	100%
WARMTH	65%
COMFORT	100%



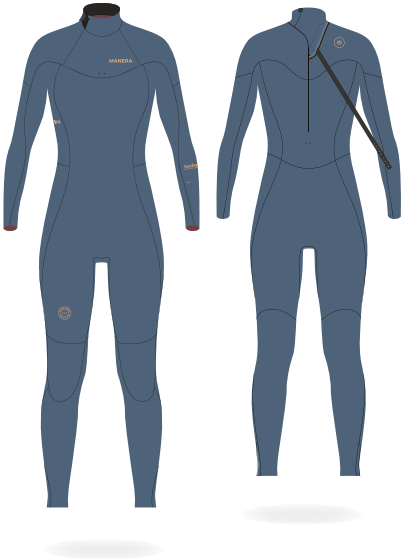
BIKISUIT
FRONTZIP

2.0

DETAILS

REF.	22231-3006
SIZING.	XS-S-M-L-XL
COLORS.	BLACK

FLEXIBILITY	100%
WARMTH	55%
COMFORT	100%



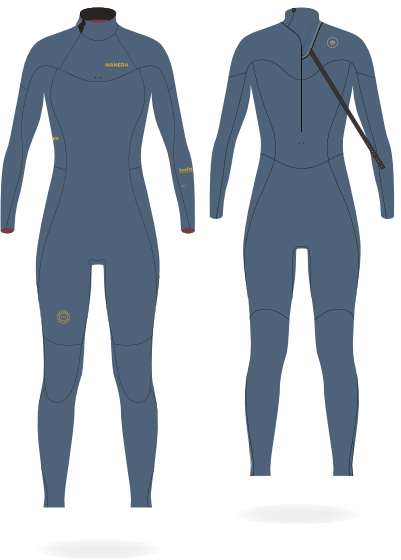
SEAFARER
BACKZIP

4.3

DETAILS

REF.	22221-5003
SIZING.	XS-S-M-L-XL
COLORS.	PEWTER

FLEXIBILITY	95%
WARMTH	75%
COMFORT	95%



SEAFARER
BACKZIP

3.2

DETAILS

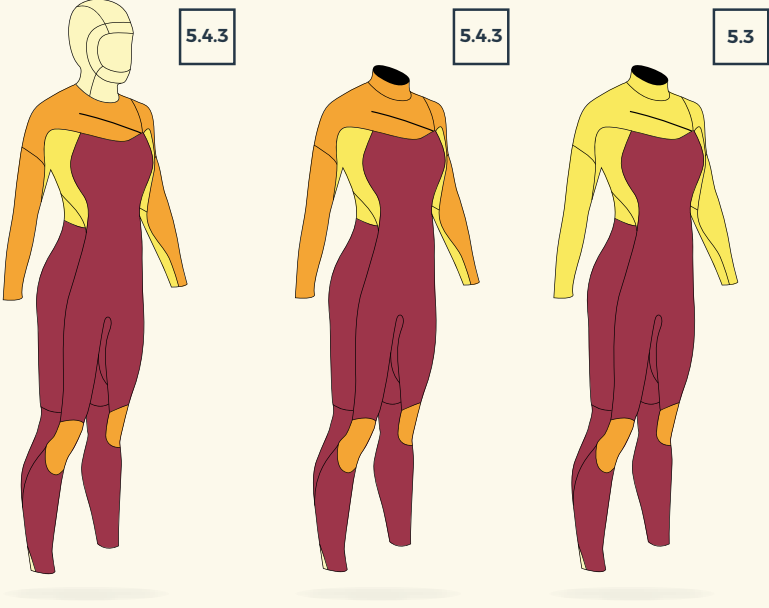
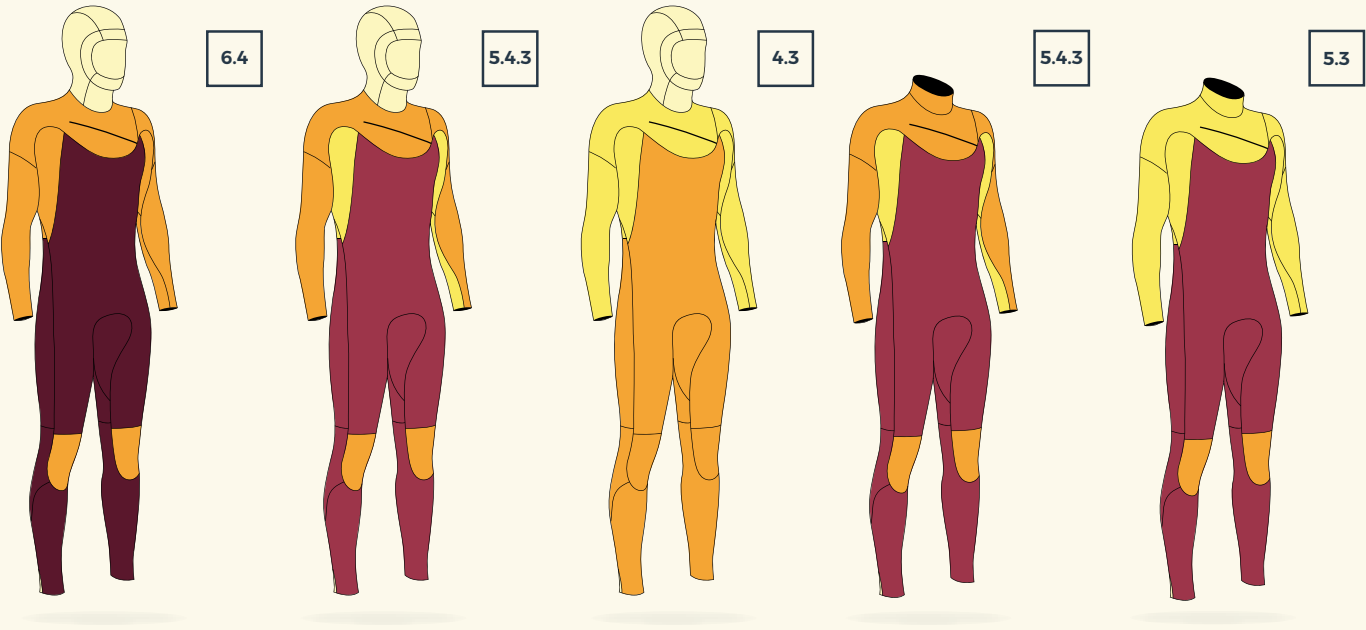
REF.	22221-5004
SIZING.	XS-S-M-L-XL
COLORS.	PEWTER

FLEXIBILITY	100%
WARMTH	70%
COMFORT	95%

THICKNESS
REPARTITION

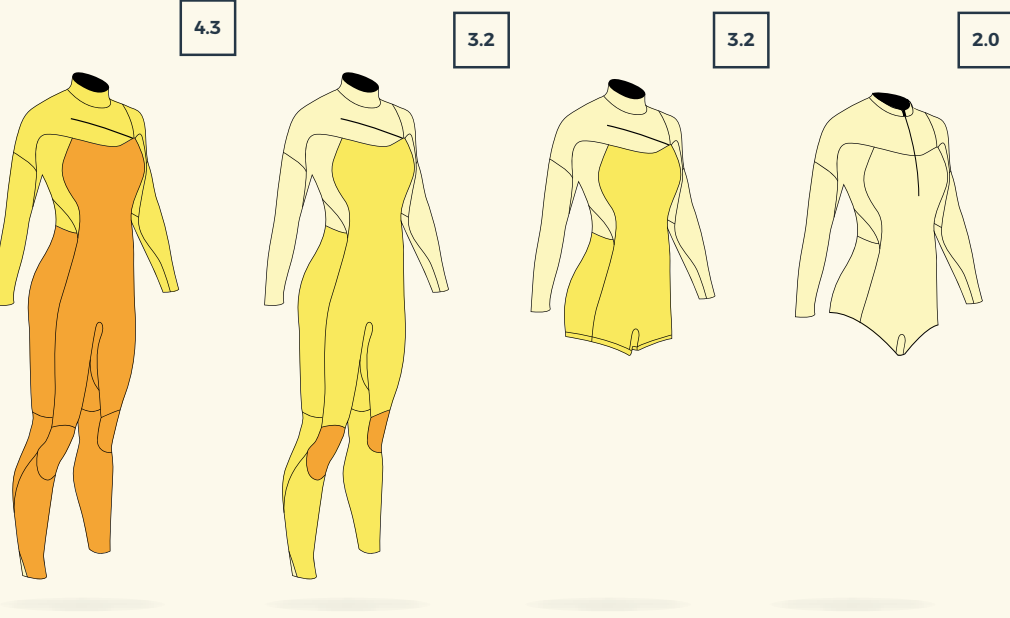
Men

Women



6 ^{MM}	50,7%				
5 ^{MM}		50,7%		54,8%	
4 ^{MM}	40,6%	33,2%	53,3%	35,9%	57,7%
3 ^{MM}		7,4%	37,9%	9,3%	42,3%
2 ^{MM}	8,8%	8,8%	8,8%		

47,4%	50,3%	52,9%
20,3%	26,5%	
23,6%	23,2%	47,1%
8,8%		



4 ^{MM}	57,7%	2,9%		
3 ^{MM}	42,3%	56,1%	50,1%	1,7%
2 ^{MM}		40,9%	49,9%	98,2%

52,9%	2,6%		
47,1%	51,6%	37,2%	
	45,7%	62,8%	100%

NEOPRENE ACCESSORIES

OVERVIEW



2.0
MM

MAGMA HOOD
Ref. 22231-0807
Sizes. S-M-L-XL
Colors. BLACK



2.0
MM

X10D HOOD
Ref. 22201-0908
Sizes. S-M-L-XL
Colors. BLACK



2.0
MM

NEW

MAGMA CAP
Ref. 22231-1706
Sizes. S-M-L-XL
Colors. BLACK



3.0
MM

NEW

SEAFARER CAP
Ref. 22231-1804
Sizes. S-M-L-XL
Colors. BLACK



2.5
MM

MAGMA GLOVES
Ref. 22201-0607
Sizes. S-M-L-XL
Colors. BLACK



2.5
MM

NEW

MAGMA OPEN PALM
Ref. 22231-0608
Sizes. S-M-L-XL
Colors. BLACK



2.0
MM

X10D GLOVES
Ref. 22201-0708
Sizes. S-M-L-XL
Colors. BLACK



7.0
MM

NEW

**MAGMA BOOTS
ROUND TOE**
Ref. 22231-1501
Sizes.
[EU] 36-37,5-39-40-41-42-43-44-45-46
[US] 4-5-6,5-7-8-8,5-9,5-10-11-12
Colors. BLACK



5.0
MM

**MAGMA BOOTS
ROUND TOE**
Ref. 22231-1502
Sizes.
[EU] 36-37,5-39-40-41-42-43-44-45-46
[US] 4-5-6,5-7-8-8,5-9,5-10-11-12
Colors. BLACK



3.0
MM

**X10D BOOTS
ROUND TOE**
Ref. 22221-1604
Sizes.
[EU] 36-37,5-39-40-41-42-43-44-45-46
[US] 4-5-6,5-7-8-8,5-9,5-10-11-12
Colors. BLACK



5.0
MM

**MAGMA BOOTS
SPLIT TOE**
Ref. 22231-1102
Sizes.
[EU] 36-37,5-39-40-41-42-43-44-45-46
[US] 4-5-6,5-7-8-8,5-9,5-10-11-12
Colors. BLACK



3.0
MM

**X10D BOOTS
SPLIT TOE**
Ref. 22221-1204
Sizes.
[EU] 36-37,5-39-40-41-42-43-44-45-46
[US] 4-5-6,5-7-8-8,5-9,5-10-11-12
Colors. BLACK



0.5
MM

**MAGMA BASELAYER
HOODED**
Ref. 22231-1301
Sizes. XS-S-M-L-XL
Colors. BLACK



0.5
MM

MAGMA BASELAYER
Ref. 22231-1302
Sizes. XS-S-M-L-XL
Colors. BLACK



0.5
MM

**X10D BASELAYER
HOODED**
Ref. 22221-1401
Sizes. XS-S-M-L-XL
Colors. BLACK



2.0
MM

X10D NEO TOP
Ref. 22221-1107
Sizes. XS-S-M-L-XL
Colors. BLACK



1.0
MM

SEAFARER NEO TOP
Ref. 22221-1208
Sizes. XS-S-M-L-XL
Colors. CASCADE / BLACK



CAR SEAT COVER
Ref. 22206-0400
Sizes. ONE SIZE
Colors. BLACK






Neoprene.

ACCESSORIES






MAGMA **BASELAYER** 0.5 mm
HOODED

DETAILS	
REF.	22221-1301
SIZING.	XS-S-M-L-XL
COLORS.	BLACK

- | FEATURES | |
|-------------|--------------|
| • Magma + | • Waterproof |
| • Glideskin | • Stretch |

MAGMA **BASELAYER** 0.5 mm

DETAILS	
REF.	22211-1208
SIZING.	XS-S-M-L-XL
COLORS.	BLACK

- | FEATURES | |
|--------------|-----------|
| • Magma + | • Stretch |
| • Waterproof | |

MAGMA **BASELAYER** 0.5 mm
HOODED

DETAILS	
REF.	22221-1401
SIZING.	XS-S-M-L-XL
COLORS.	BLACK

- | FEATURES | |
|--------------|-----------|
| • X1D Jersey | • Stretch |
| • Waterproof | |



X10D **NEO TOP** 2.0 mm
SUMMER SESSION

DETAILS	
REF.	22211-1107
SIZING.	XS-S-M-L-XL
COLORS.	BLACK

- | FEATURES | |
|-----------------------|--|
| • 3D designed | |
| • Flatlock | |
| • Elastic Thightening | |



SEAFARER **NEO TOP** 1.0 mm
SUMMER SESSION

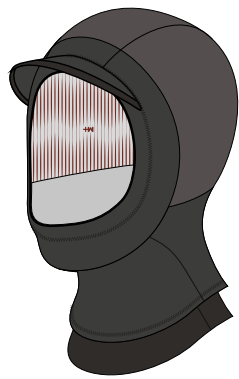
DETAILS	
REF.	22211-1208
SIZING.	XS-S-M-L-XL
COLORS.	CASCADE / BLACK

- | FEATURES | |
|---------------|--|
| • 3D designed | |
| • Flatlock | |



CAR **SEAT COVER**

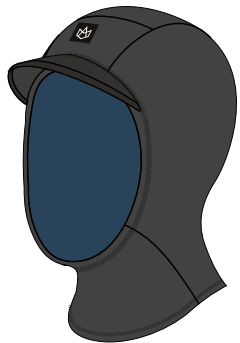
DETAILS	
REF.	22206-0400
SIZING.	ONE SIZE
COLORS.	BLACK



MAGMA HOOD
COLD SESSION

2.0
mm

DETAILS	
REF.	22231-0807
SIZING.	S-M-L-XL
COLORS.	BLACK



X10D HOOD
COLD SESSION

2.0
mm

DETAILS	
REF.	22201-0908
SIZING.	S-M-L-XL
COLORS.	BLACK



NEW

MAGMA CAP
COLD SESSION

2.0
mm

DETAILS	
REF.	22231-1706
SIZING.	S-M-L-XL
COLORS.	BLACK



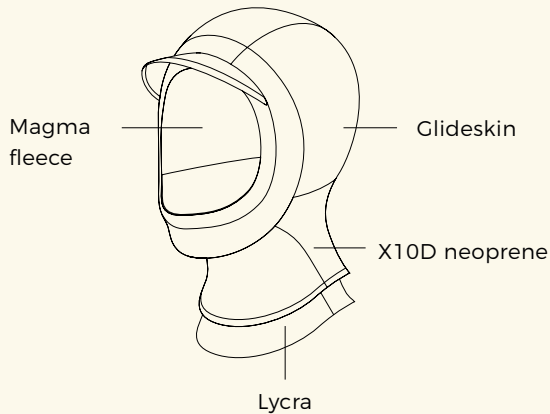
NEW

SEAFARER CAP
COLD SESSION

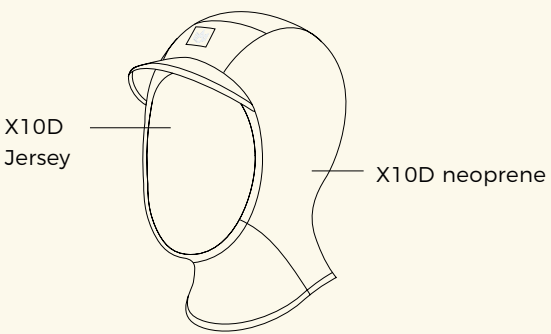
3.0
mm

DETAILS	
REF.	22231-1804
SIZING.	S-M-L-XL
COLORS.	BLACK

FEATURES



MAGMA HOOD

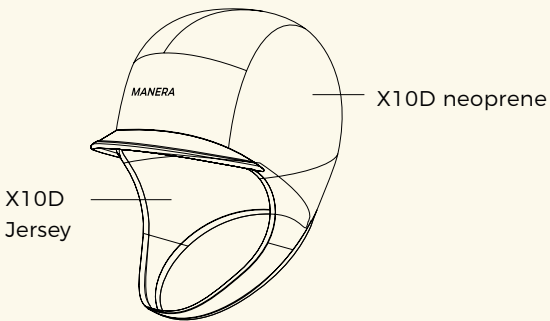


X10D HOOD

FEATURES



MAGMA CAP



SEAFARER CAP

Many people put off wearing boots, and this is often because the feeling of the feet against the board is less precise.

That is why our neoprene boots are designed to support the feet, providing sound, precise movement.



NEW

MAGMA **BOOTS**
ROUND TOE

7.0
mm

DETAILS

REF. 22231-1502
SIZING. [EU] 36-37,5-39-40-41-42-43-44-45-46
[US] 4-5-6,5-7-8-8,5-9,5-10-11-12
COLORS. BLACK

FEATURES

- Rubber sidewalls ensure the foot is locked and maintained.
- MAGMA+ Fleece provides warmth and fast drying.



MAGMA **BOOTS**
ROUND TOE

5.0
mm

DETAILS

REF. 22231-1502
SIZING. [EU] 36-37,5-39-40-41-42-43-44-45-46
[US] 4-5-6,5-7-8-8,5-9,5-10-11-12
COLORS. BLACK

FEATURES

- Rubber sidewalls ensure the foot is locked and maintained.
- MAGMA+ Fleece provides warmth and fast drying.

M+



NEW



X10D **BOOTS**
ROUND TOE

3.0
mm

DETAILS

REF. 22211-1604
SIZING. [EU] 36-37,5-39-40-41-42-43-44-45-46
[US] 4-5-6,5-7-8-8,5-9,5-10-11-12
COLORS. BLACK

FEATURES

- Rubber sidewalls ensure the foot is locked and maintained.
- A donut shaped cuff prevents water from getting in
- X10D jersey keeps boots light.



MAGMA **BOOTS**
SPLIT TOE

5.0
mm

DETAILS

REF. 22231-1102
SIZING. [EU] 36-37,5-39-40-41-42-43-44-45-46
[US] 4-5-6,5-7-8-8,5-9,5-10-11-12
COLORS. BLACK

FEATURES

- Rubber sidewalls ensure the foot is locked and maintained.
- MAGMA+ Fleece provides warmth and fast drying.



X10D **BOOTS**
SPLIT TOE

3.0
mm

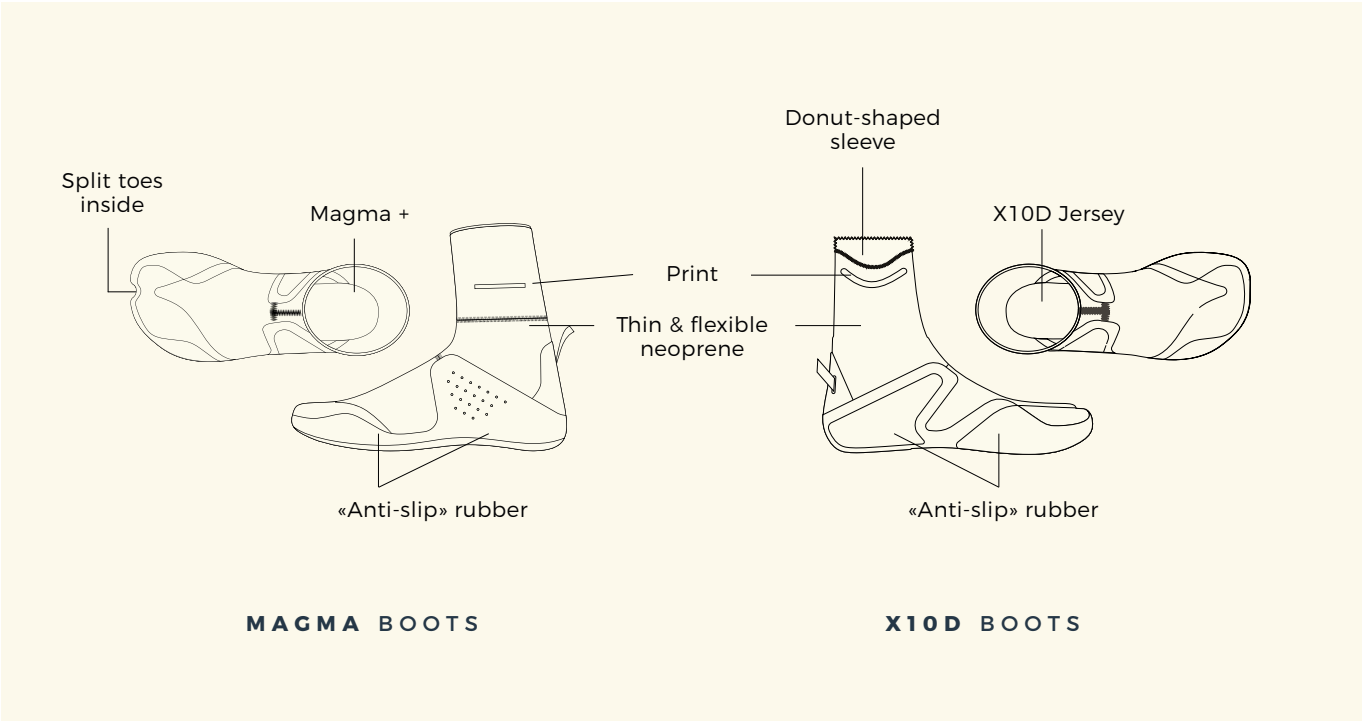
DETAILS

REF. 22221-1204
SIZING. [EU] 36-37,5-39-40-41-42-43-44-45-46
[US] 4-5-6,5-7-8-8,5-9,5-10-11-12
COLORS. BLACK

FEATURES

- Rubber sidewalls ensure the foot is locked and maintained.
- A donut shaped cuff prevents water from getting in
- X10D jersey keeps boots light.

FEATURES



MAGMA **BOOTS**

X10D **BOOTS**



MAGMA GLOVE
COLD SESSION

2.5
mm

DETAILS

REF.	22231-0607
SIZING.	S-M-L-XL
COLORS.	BLACK

FEATURES

- Magma +
- Waterproof
- Glideskin
- Stretch



NEW

MAGMA OPEN PALM
COLD SESSION

2.5
mm

DETAILS

REF.	22231-0608
SIZING.	S-M-L-XL
COLORS.	BLACK

FEATURES

- Magma +
- Waterproof
- Glideskin
- Stretch



X10D GLOVE
COLD SESSION

2.0
mm

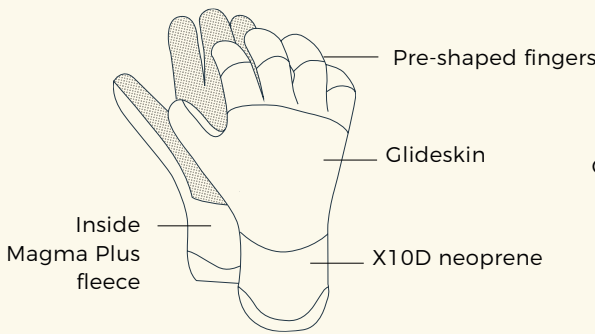
DETAILS

REF.	22201-0708
SIZING.	S-M-L-XL
COLORS.	BLACK

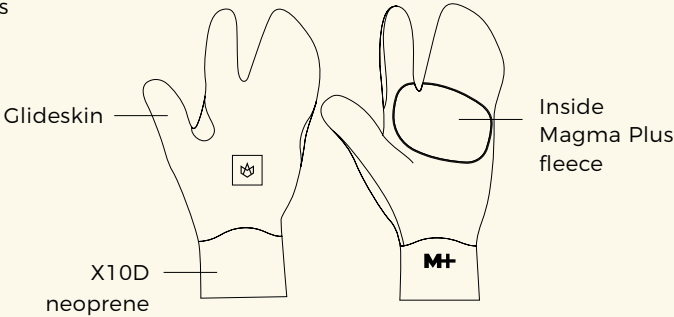
FEATURES

- X10D Jersey
- Waterproof
- Stretch

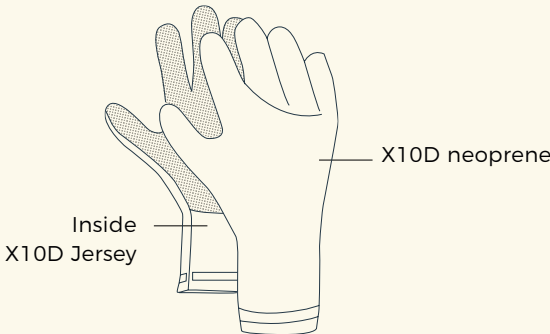
F E A T U R E S



MAGMA GLOVE



MAGMA OPEN PALM



X10D GLOVE

HARNESS

OVERVIEW

NEW

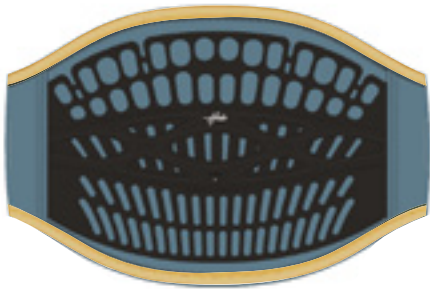


BLACK

HALO

Ref. 22232-0600 / 22222-0600
Sizes. XS-S-S+-M-M+-L-XL
Colors. BLACK / STORMY

HARDSHELL	100%
LIGHTNESS	100%
DURABILITY	100%



STORMY



MIRAGE

EXO 2.0

Ref. 22232-0200
Sizes. XS-S-S+-M-M+-L-XL
Colors. MIRAGE

STIFFNESS	70%
LIGHTNESS	80%
DURABILITY	90%



BLACK

ECLIPSE

Ref. 22232-0100
Sizes. XS-S-S+-M-M+-L-XL
Colors. BLACK / LARGO

HARDSHELL	70%
LIGHTNESS	90%
DURABILITY	90%



LARGO



HALO - ADAPTIVE SKIN

Ref. 22222-5004
Sizes. XS/S/M - L/XL
Colors. BLACK



HALO - HARDSHELL

Ref. 22222-5005
Sizes. XS-S-M-L-XL
Colors. BLACK



HALO - SOFT SPARE PART

Ref. 22222-5003
Sizes. XS-S-M-L-XL
Colors. BLACK



HALO - STRAP & PLASTIC BUCKLE

Ref. 22222-5009
Sizes. UNIQUE SIZE
Colors. BLACK



HALO - PIVOT INTER (x1)

Ref. 22222-5006
Sizes. UNIQUE SIZE
Colors. BLACK



HALO - PIVOT EXTER (x1)

Ref. 22222-5007
Sizes. UNIQUE SIZE
Colors. BLACK



HALO - M5 SCREW
+ NUT FOR AXIS

Ref. 22222-5008
Sizes. UNIQUE SIZE
Colors. SST



KITE KNIFE

Ref. 22222-5001
Sizes. UNIQUE SIZE
Colors. RED



ARC - SPREADERBAR

Ref. 22232-4001
Sizes. 24-28-32
Colors. BLACK



ARC - SLIDING ROPE

Ref. 22232-4002
Sizes. 24-28-32
Colors. BLACK



ARC - SST HOOK (x1)

Ref. 22232-4003
Sizes. UNIQUE SIZE
Colors. SST



ARC - BUCKLES (x2)

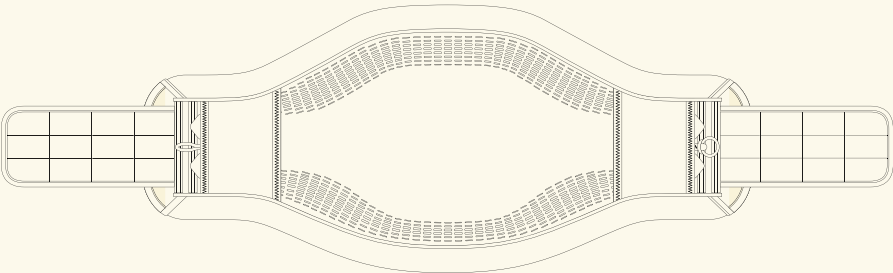
Ref. 22232-4004
Sizes. UNIQUE SIZE
Colors. BLACK

HOW TO CHOOSE

HARNESSES

EXO 2.0

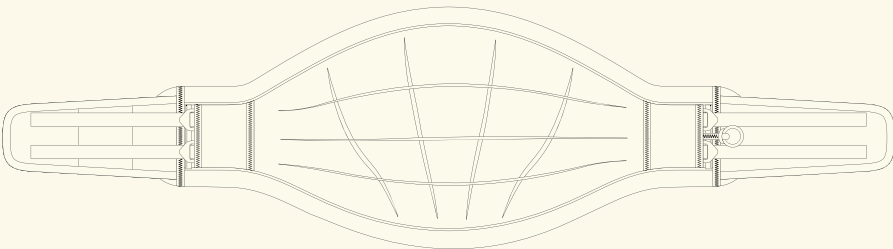
(Size M)
WEIGHT 1.75KG
HEIGHT 27.6CM



<u>HARDSHELL</u>	<u>LIGHTNESS</u>
70%	80%
<u>DURABILITY</u>	<u>PROFILE</u>
90%	High

ECLIPSE

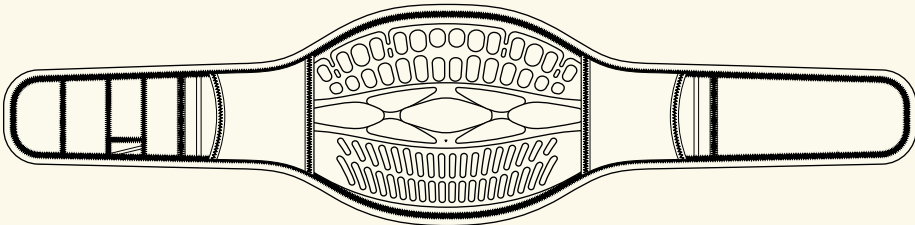
(Size M)
WEIGHT 1.55KG
HEIGHT 27CM



<u>HARDSHELL</u>	<u>LIGHTNESS</u>
70%	90%
<u>DURABILITY</u>	<u>PROFILE</u>
90%	Medium

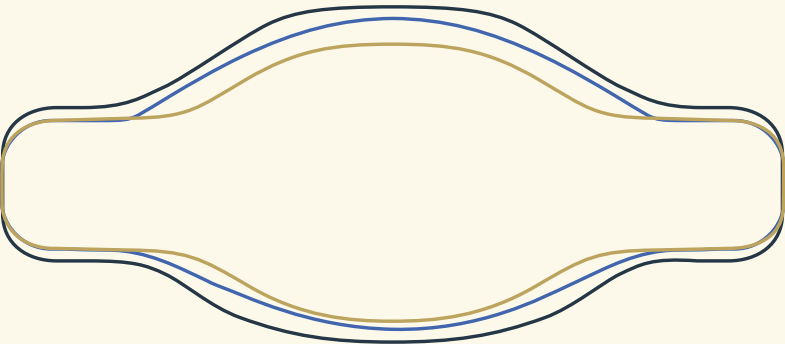
HALO

(Size M)
WEIGHT 1.35KG
HEIGHT 26CM



<u>HARDSHELL</u>	<u>LIGHTNESS</u>
100%	100%
<u>DURABILITY</u>	<u>PROFILE</u>
100%	Low

HARNESSES OUTLINES



Exo 2.0 Eclipse Halo



Halo.

H A R N E S S



Support

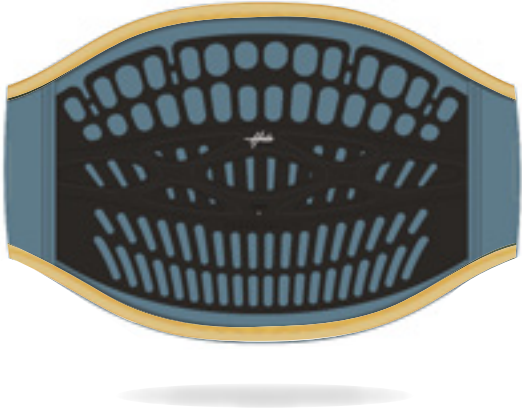


BLACK



STORMY

NEW



HALO HARNESS

DETAILS

REF.	22232-0600 / 22222-0600
SIZING.	XS-S-S+-M-M+-L-XL
COLORS.	BLACK / STORMY

HARDSHELL	100%
LIGHTNESS	100%
DURABILITY	100%

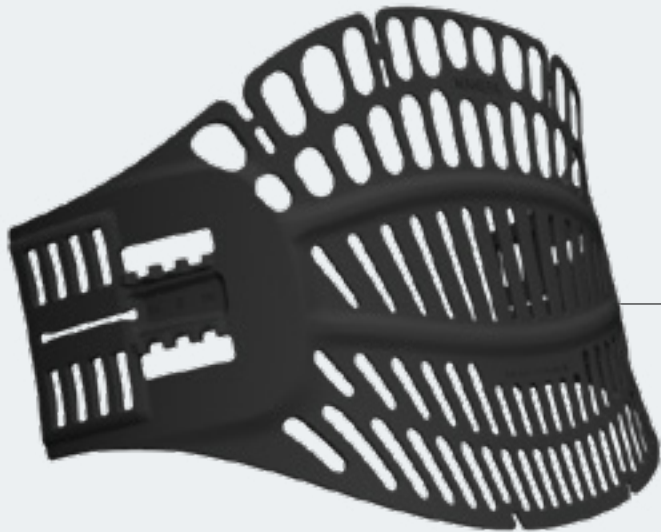
HARDSHELL	100%
LIGHTNESS	100%
DURABILITY	100%
PROFILE	Low

THE HALO

A NEW GENERATION OF HARNESS

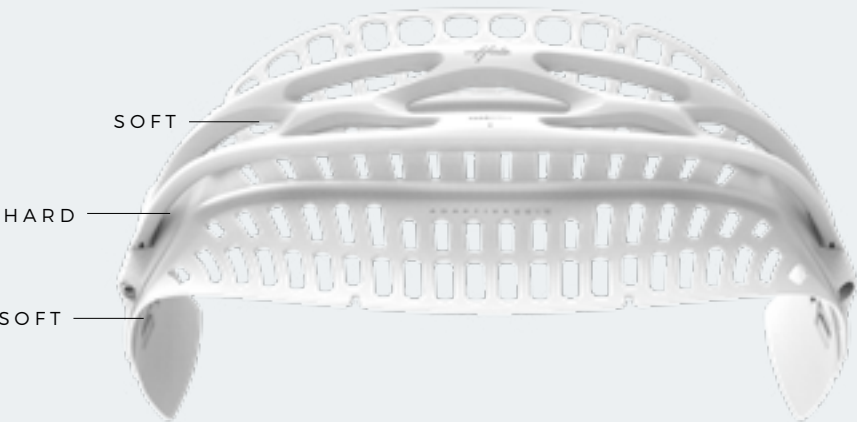
ADAPTIVE SHELL

A FEW YEARS AGO, WE STARTED THE “ADAPTIVE SHELL” PROJECT, WHICH GOAL WAS TO REINVENT THE KITE HARNESS. THIS PATENTED* TECHNOLOGY IS CHARACTERIZED BY TWO MAIN FUNCTIONS:



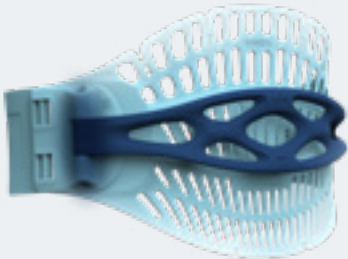
ADAPTIVE SKIN

- is a backing strip made out of flexible material that allows maximum adaptability and freedom of movement to the user.
- It is directly in contact with the body, its function is to provide comfort to the user.



HARDSHELL

- is a rigid arch preventing the harness from folding due to the kite's high loads, and therefore squeezing the user's sides.
- It is not in contact with the user, its function is to sustain all the mechanical forces that the harness endures.



KITE KNIFE INCLUDED

ASSEMBLING THE ADAPTIVE SKIN AND THE HARD SHELL TOGETHER RESULTS IN THE BEST HARNESS WE'VE EVER MADE. IT PERFECTLY ADAPTS TO YOUR MORPHOLOGY AND TO YOUR MOVEMENTS, WHILE OFFERING AN UNMATCHED SUPPORT THANKS TO AN INNOVATIVE LOADS MANAGEMENT.

HARDSHELL	100%
LIGHTNESS	100%
DURABILITY	100%
PROFILE	Low

THE HALO

A NEW GENERATION OF HARNESS

ARC SPREADERBAR



TECHNOLOGIES



- 1CLIP SYSTEM
- The ARC easy-to-clip system is locked once tightened, which provides a precise and smooth riding without improper movements.



- 2SST CORE
- The ARC is built with a robust Stainless-Steel core that is able to withstand 800kg loads, which is much higher than the standard kite requirements.



- 3TUCKFLAP 2.0
- Once inserted and locked into the harness, not only they prevent the harness from going up, but they also have an anti-compression function preventing the loads of the kite to squeeze the harness around your hips.

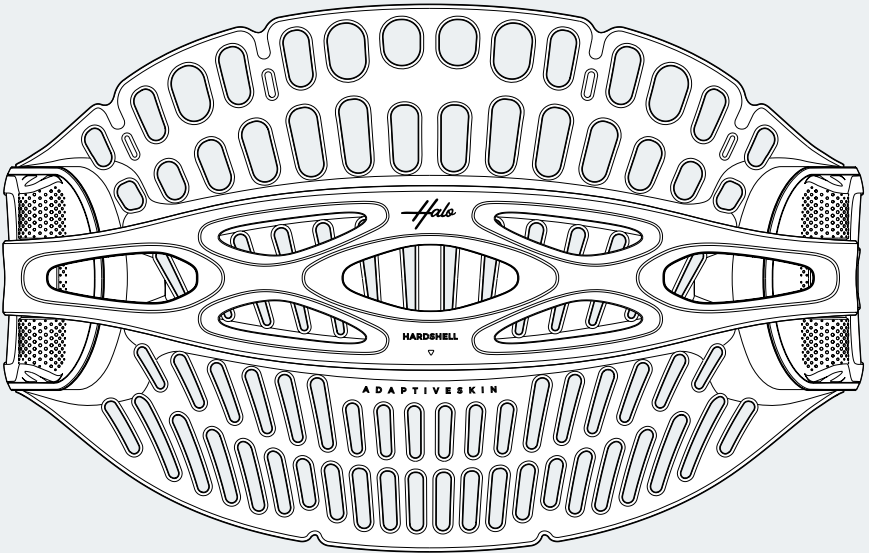


- 4HOOK / SLIDING
- The ARC is easily convertible between standard hook and a sliding rope.

THE HALO

A NEW GENERATION OF HARNESS

DURABILITY

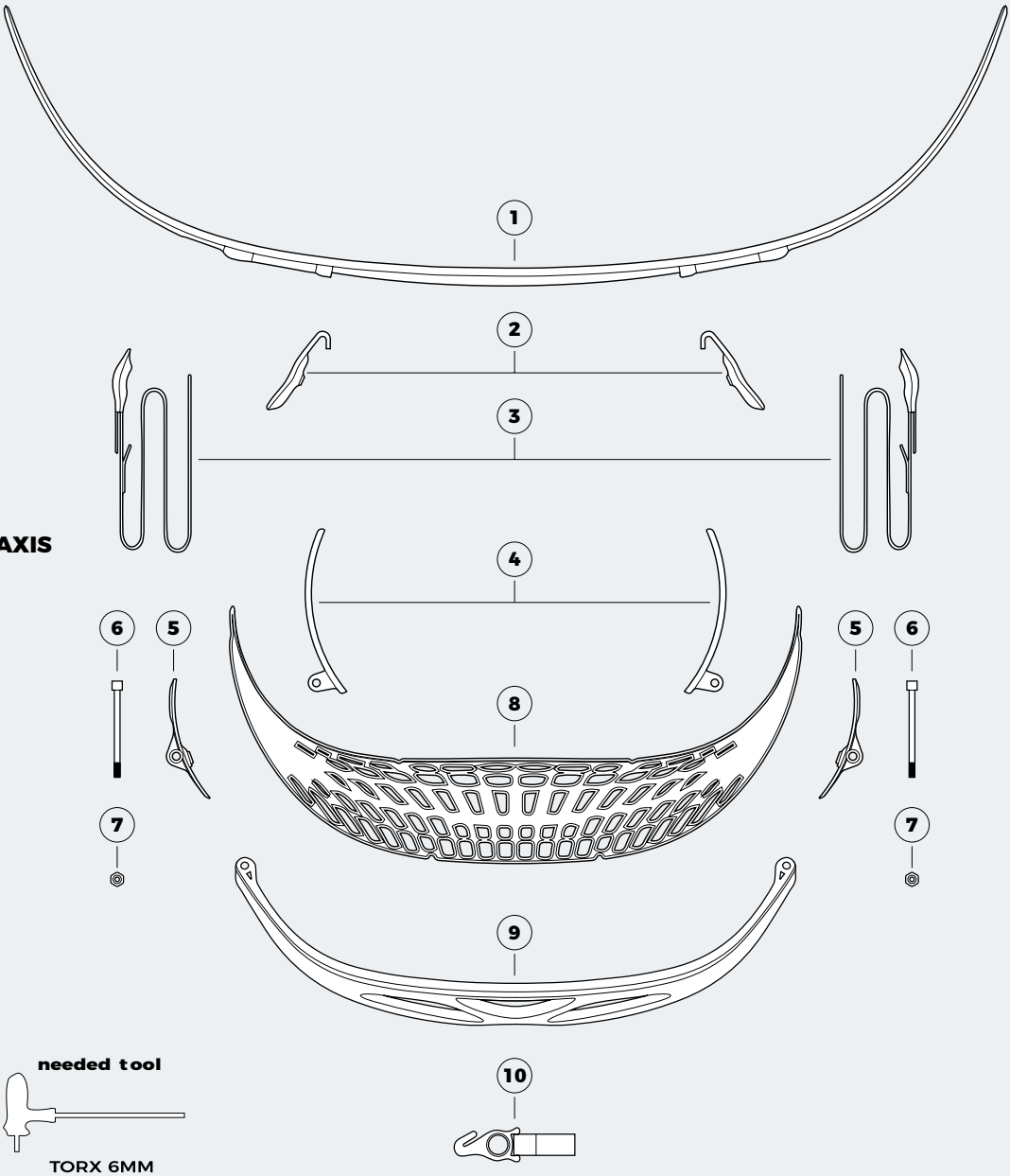


A PRODUCT IS AS DURABLE AS THE LEAST DURABLE OF ITS PARTS.

In order to reduce our carbon footprint and offer a better service to our customers, the HALO is assembled in different parts that are not stitched or glued, therefore they are easily replaceable.

We will stock spare-parts and will be able to replace any part in case of a manufacturing defect. We will also offer the spare-parts to sell if a customer just wants to change.

- 1 SOFT SPARE PARTS
- 2 ARC BUCKLES
- 3 STRAP & PLASTIC BUCKLE
- 4 PIVOT INTER
- 5 PIVOT EXTER
- 6 7 M5 SCREW + M5 NUT FOR AXIS
- 8 ADAPTIVE SKIN
- 9 HARDSHELL
- 10 KITE KNIFE

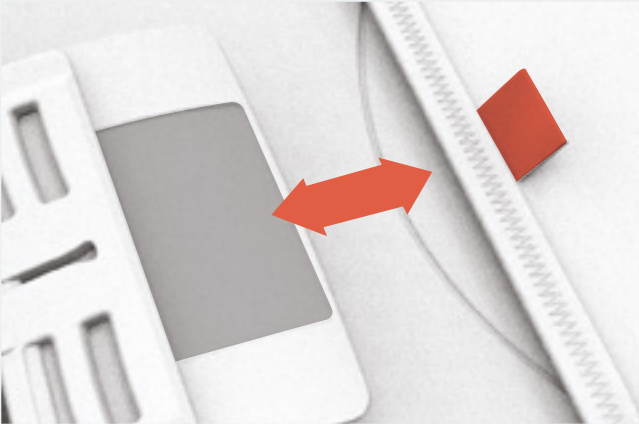


THE HALO

A NEW GENERATION OF HARNESS

SPARE PARTS GUIDELINE

1 UNSCRATCH INTERNAL PIVOTS(4) UNDERFLAP



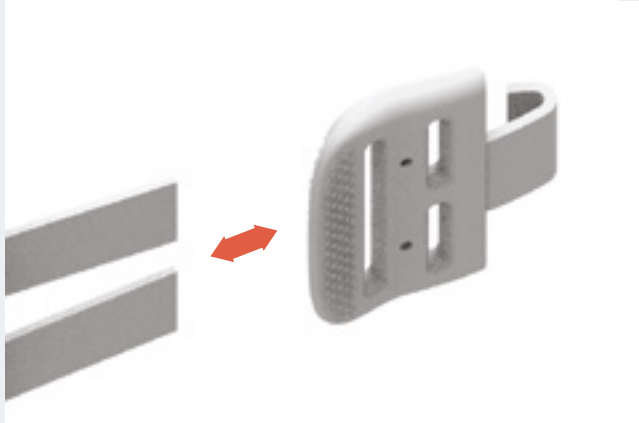
2 REMOVE INTERNAL PIVOTS(4) FROM SOFT NEO(1)



3 REMOVE WEBBINGS(3) FROM BUCKLES(2)



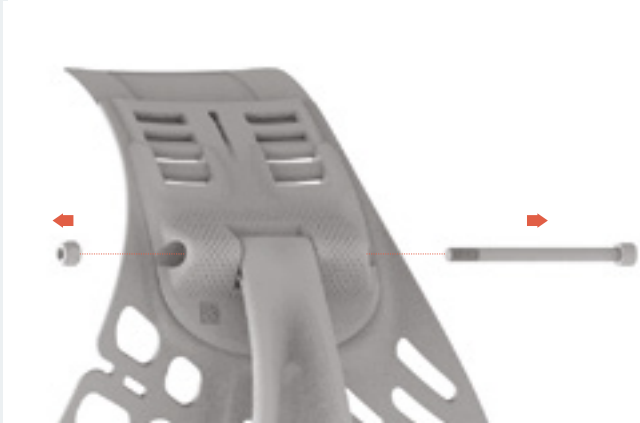
3 REMOVE WEBBINGS(3) FROM BUCKLES(2)



4 REMOVE WEBBINGS(3) FROM ADAPTIVE SKIN



5 UNSCREW THE SST SCREW(6)



6 SPLIT PARTS



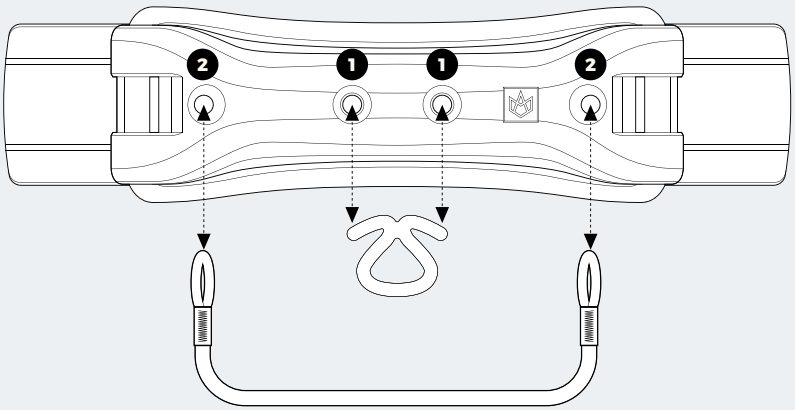
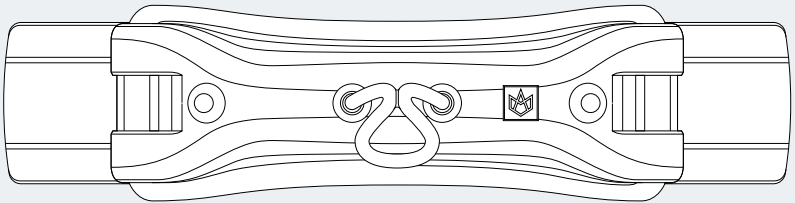
7 CHANGE THE SPECIFIC PIECE



THE HALO

A NEW GENERATION OF HARNESS

HOOK/SLIDING

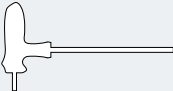


1 HOOK HOLES **2 ROPE HOLES**

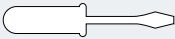
 **WARNING: USE ADAPTED HOLES**

- 1 SST SCREWS**
- 2 ERGONOMIC FOAM**
- 3 FLAT SCREW**
- 4 M6 NUT**
- 5 SST WASHER**
- 6 SPREADER ARC**
- 7 HOOK**
- 8 SLIDING ROPE**

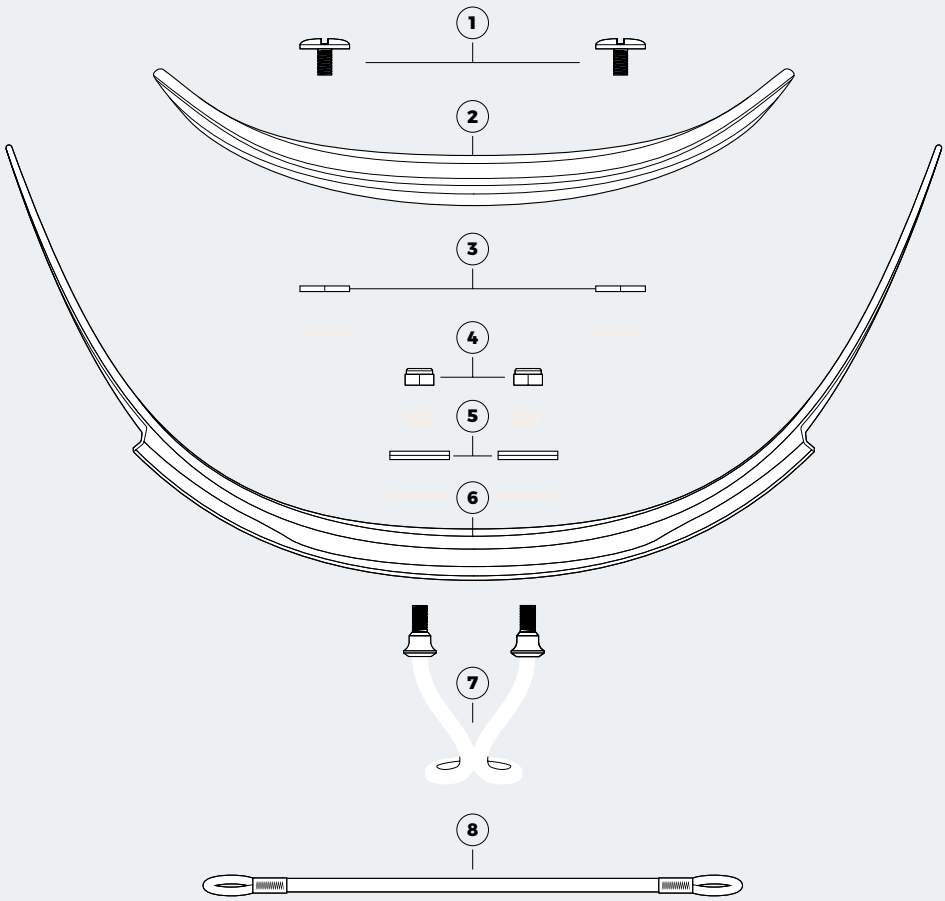
needed tools



TORX 6MM



flat screwdriver
(or a coin)

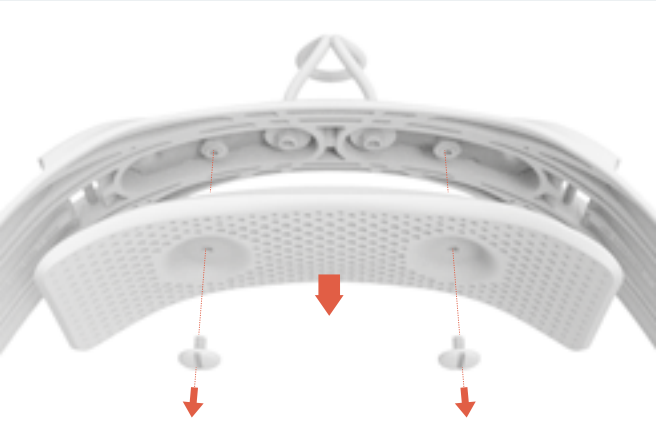


THE HALO

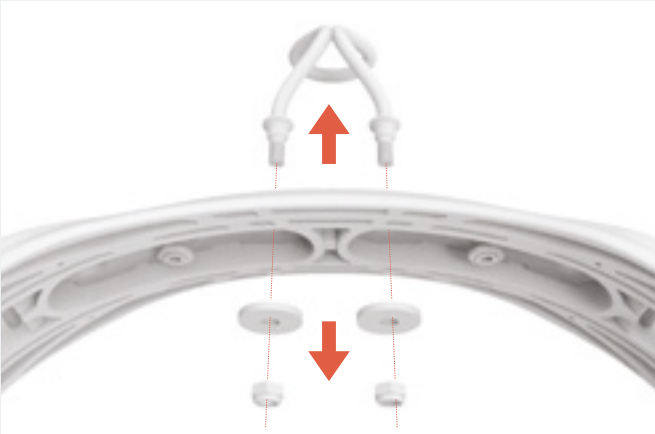
A NEW GENERATION OF HARNESS

HOOK/SLIDING GUIDELINE

1 UNSCREW SST SCREWS(1), THEN REMOVE FOAM(2)



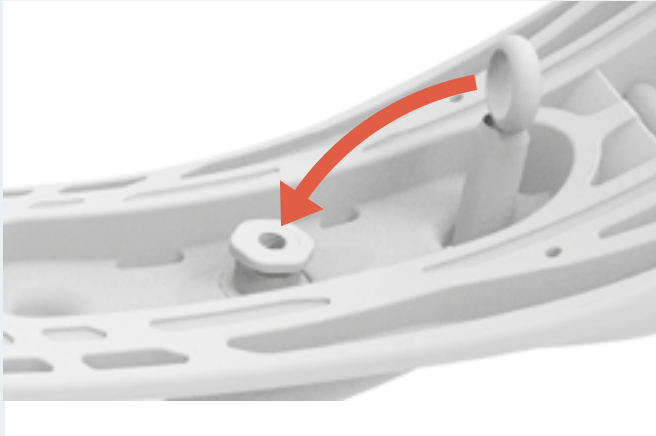
2 UNSCREW NUTS(4), THEN REMOVE HOOK(7)



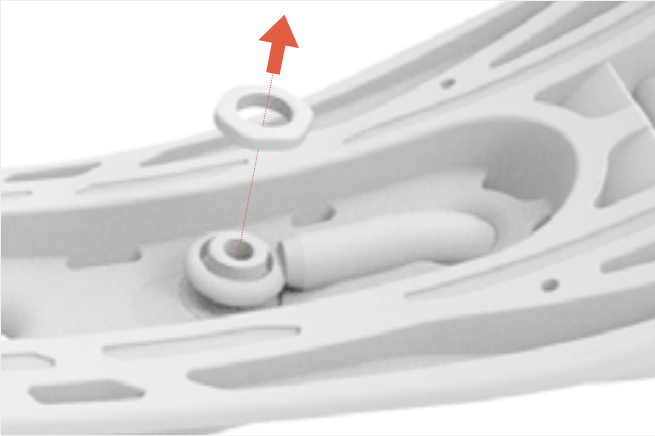
3 PASS THE ADAPTED ROPE(8) THROUGH THE SPREADER



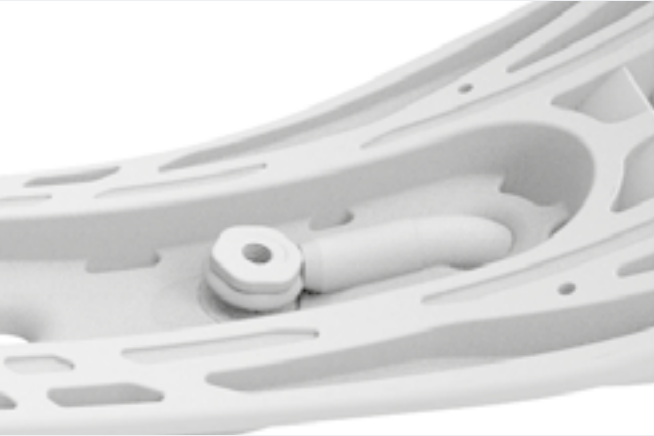
4 PASS LOOPS AROUND FLATSCREWS(3)



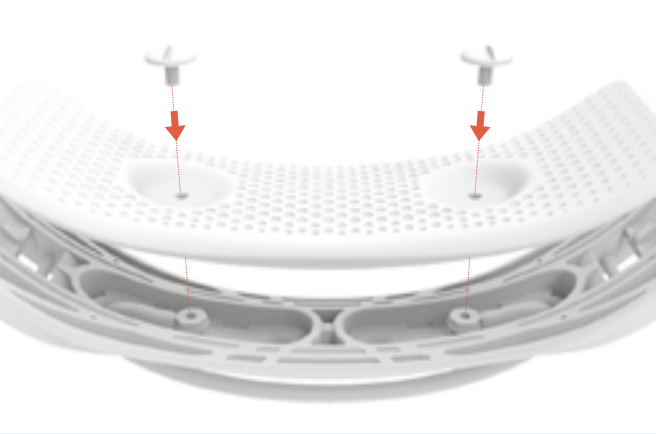
5 UNSCREW FLATSCREWS(3) IF NEEDED



6 THEN SCREW FLATSCREW(3) TO LOCK THE ROPE(8)



7 SCREW SST SCREWS(1), WITH THE FOAM(2)



8 CHECK EVERYTHING IS LOCKED



9 ENJOY



THE HALO

A NEW GENERATION OF HARNESS

SIZE CHART

HARNESS & SPREADERBAR

OUR EXTENSIVE EXPERIENCE IN HARNESS MANUFACTURING ALLOWED US TO DEVELOP THE HALO SIZING JUST RIGHT.

In order to offer the best experience to all our customers, we have added two sizes: S+ and M+. These two new sizes are the exact same harnesses as the standard S and M, except there are equipped with a longer spreaderbar.

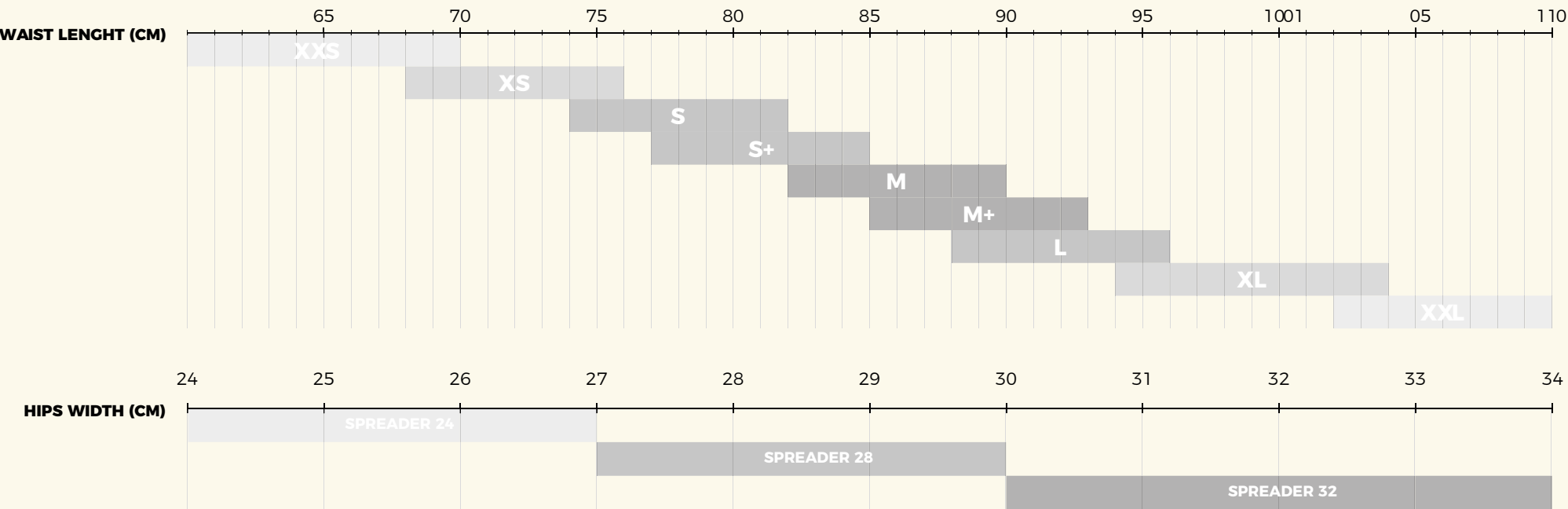
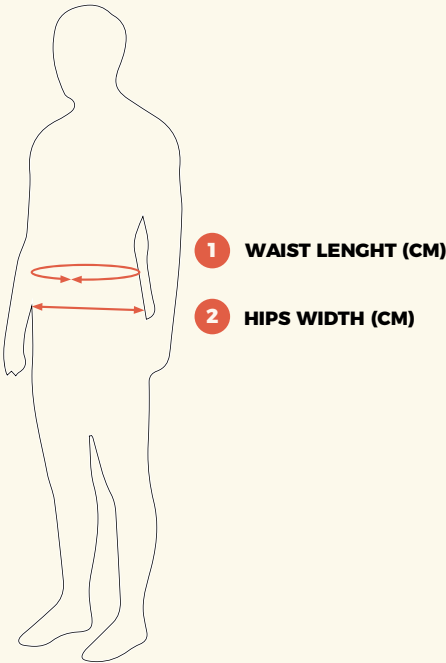
Why?

The body can take two different shapes:

- A rounder shape (someone with a big belly)
- A more oval shape (someone with larger hips)

For the same waist girth, we can then have two completely different morphologies. By integrating longer spreaderbar, the S+ and M+ harnesses are made for people with larger hips.

RIDER	¹ WAIST LENGHT	HARNESS	² HIPS WIDTH	SPREADER
XXS	62-70	XXS	24-27	24
XS	68-76	XS	24-27	24
S	74-82	S	24-27	24
S+	77-85	S	28-30	28
M	82-90	M	28-30	28
M+	85-93	M	31-34	32
L	88-96	L	31-34	32
XL	94-104	XL	31-34	32
XXL	102-114	XXI	31-34	32



Harness.

ACCESSORIES

NEW



HALO **ADAPTIVE SKIN**

DETAILS	
REF.	22222-5004
SIZING.	XS-S-M-L-XL
COLORS.	BLACK



HALO **HARDSHELL**

DETAILS	
REF.	22222-5004
SIZING.	XS-S-M-L-XL
COLORS.	BLACK



HALO **SOFT SPAREPART**
(x1)

DETAILS	
REF.	22222-5003
SIZING.	UNIQUE
COLORS.	BLACK



HALO **STRAP & PLASTIC BUCKLE**

DETAILS	
REF.	22222-5007
SIZING.	UNIQUE
COLORS.	BLACK



HALO **PIVOT INTER** (x1)

DETAILS	
REF.	22222-5006
SIZING.	UNIQUE
COLORS.	BLACK



HALO **PIVOT EXTER** (x1)

DETAILS	
REF.	22222-5006
SIZING.	UNIQUE
COLORS.	BLACK



HALO **M5 SCREW & M5 NUT FOR AXIS**

DETAILS	
REF.	22222-5008
SIZING.	UNIQUE
COLORS.	SST



KITE **KNIFE**

DETAILS	
REF.	22232-5001
SIZING.	UNIQUE
COLORS.	RED



ARC **SPREADERBAR**

DETAILS	
REF.	22232-4001
SIZING.	24CM - 28CM - 32CM (XS-S) - (M-L) - (XL-XXL)
COLORS.	BLACK



ARC **SLIDING ROPE**

DETAILS	
REF.	22232-4002
SIZING.	24CM - 28CM - 32CM (XS-S) - (M-L) - (XL-XXL)
COLORS.	BLACK



ARC **SST HOOK** (x1)

DETAILS	
REF.	22232-4003
SIZING.	UNIQUE
COLORS.	SST



ARC **BUCKLES** (x2)

DETAILS	
REF.	22232-4004
SIZING.	UNIQUE
COLORS.	BLACK



Eclipse.

H A R N E S S



3
2
0
2

Support



ADAPTIVE SHELL

E C L I P S E

BLACK



LARGO



NEW

ECLIPSE HARNESS

DETAILS

REF.	22232-0100
SIZING.	XS-S-S+-M-M+-L-XL
COLORS.	BLACK / LARGO

HARDSHELL	70%
LIGHTNESS	90%
DURABILITY	90%

adaptability
&
Support

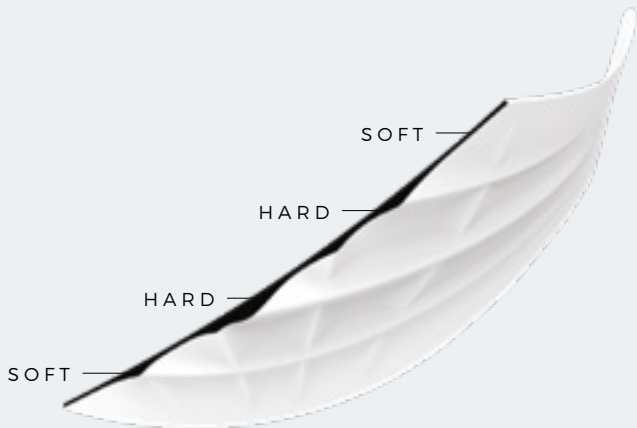
35

HARNES

ECLIPSE HARNESS

KEY FEATURES

HARDSHELL	70%
LIGHTNESS	90%
DURABILITY	90%
PROFILE	Medium



ADAPTIVE SHELL

- The Adaptive Shell stiffness shades from hard in the center area to softer on the edges
- The stiff center-belt prevents the harness from folding and compressing your body while preserving a good lumbar support
- The softer outline preserves intuitive mobility and adaptability
- It results in a shell that is forgiving where you need flex and stiff where you want support

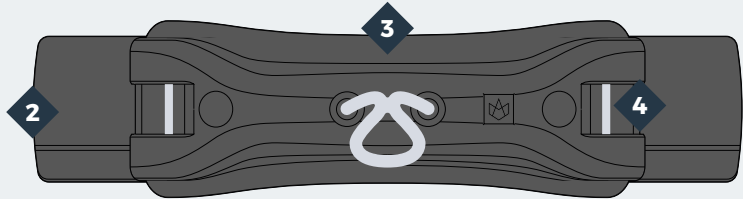


R&D HARNESS

Having worked on ergonomic designs for a while, our goal was to push our frame concept to more stiffness, allowing a better support of the back & a lower fit.

But something 100% hard was not an option: Our back needs some adaptability & human morphology is unique.

So here comes the ECLIPSE, a skilful balance between stiffness & flex that brings support where you need it and the freedom to move the way you want.



Technologies



1 GEL FOAM

- The gel foam disperses pressure evenly & efficiently to provide a "pillow comfort", much appreciated during long sessions
- It creates a different sense of feeling while riding as it moves along with your movements, therefore the contact with the harness is more intuitive & it prevents any rash or rubbing discomfort



2 TUCK FLAP

- Flaps are inserted into the harness, they are compressed and locked when straps are tighten
- Stiffen the connection between spreader bar & harness & prevent it from riding up



3 ARC SPREADER BAR

- ECLIPSE & EXO are now delivered with our innovative ARC spreaderbar



4 DOWN HOLD SYSTEM

- The spreader bar has an asymmetrical attachment that distributes the forces downward
- Secured in its original position, the hook does not ride back up



Exo.

H A R N E S S



Comfort

e x o
(i i)



NEW

EXO HARNESS

DETAILS

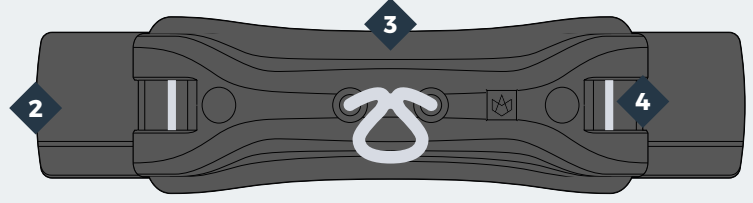
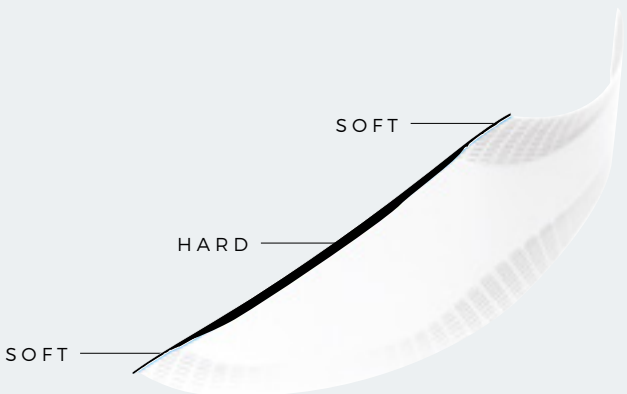
REF.	22212-0200
SIZING.	XS-S-S+-M-M+-L-XL
COLORS.	MIRAGE

HARDSHELL	70%
LIGHTNESS	80%
DURABILITY	90%

EXO HARNESS

KEY FEATURES

HARDSHELL	70%
LIGHTNESS	80%
DURABILITY	90%
PROFILE	High



R&D HARNESS

It is difficult to improve upon a harness like the EXO, but we learned a lot by developing the ECLIPSE and so we used this experience to redesign our top harness.

We've applied Adaptive shell technology to our EXO model to give it better support, improved weight and durability. The EXO uses a more rigid frame incorporating different levels of stiffness.



ADAPTIVE SHELL

- The Adaptive Shell stiffness shades from hard in the center area to softer on the edges
- The stiff center-belt prevents the harness from folding and compressing your body while preserving a good lumbar support
- The softer outline preserves intuitive mobility and adaptability
- It results in a shell that is forgiving where you need flex and stiff where you want support

Technologies



1 SINGLE FOAM

- Thermoformed one-piece foam backing
- Much lighter than multiple foam layups used in some harnesses
- More durable as there are less parts to be glued or stitched together



2 TUCK FLAP

- Flaps are inserted into the harness, they are compressed and locked when straps are tighten
- Stiffen the connection between spreader bar & harness & prevent it from riding up



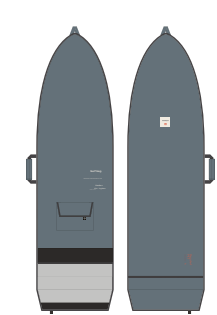
3 ARC SPREADER BAR

- ECLIPSE & EXO are now delivered with our innovative ARC spreaderbar



4 DOWN HOLD SYSTEM

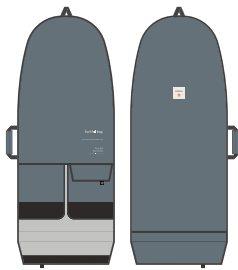
- The spreader bar has an asymmetrical attachment that distributes the forces downward
- Secured in its original position, the hook does not ride back up



SURF
5'3 / 5'6 / 6'0
Ref. 22223-0104 / 22223-0105
22223-0106
Sizes. 5'3 -163x53CM
5'6 -175x54CM
6'0 -188x58CM
Weight. 1KG
Colors. SLATE



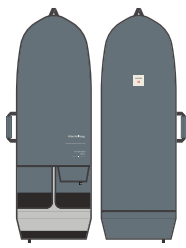
SURF
6'5 / 7'2
Ref. 22223-0107 / 22223-0108
22223-0108
Sizes. 6'5 -200x60CM
7'2 -220x66CM
Weight. 1KG
Colors. SLATE



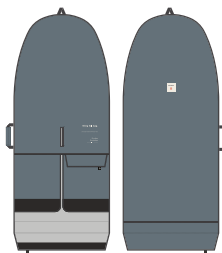
SURF FOIL
4'4 / 4'8
Ref. 22223-0109 / 22223-0110
22223-0110
Sizes. 4'4 -135x60CM
4'8 -145x65CM
Weight. 1KG
Colors. SLATE



TWIN-TIP
Ref. 22223-0101
Sizes. 5'0 -145x50CM
Weight. 1KG
Colors. SLATE



KITEFOIL
Ref. 22223-0103
Sizes. 4'3 -130x50CM
5'0 -145x60CM
Weight. 1KG
Colors. SLATE



WING
5'0 / 5'5 / 6'0
Ref. 22223-0111 / 22223-0112
22223-0113
Sizes. 5'0 -156x70CM
5'5 -170x75CM
6'0 -185x85CM
Weight. 1KG
Colors. SLATE



BOARDBAGS

OVERVIEW

NEW



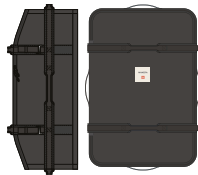
747 WHEELS
Ref. 22233-0203
Sizes. 150x32x47CM
Weight. 4.7KG
Colors. BLACK



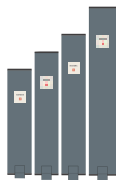
747 WHEELS
Ref. 22233-0203
Sizes. 175x30x54CM
190x30x54CM
220x30x54CM
Weight. 5.5KG
Colors. BLACK



FOIL WHEELS
5'0 / 5'5 / 6'0
Ref. 22233-0206
Sizes. 5'0 - 160x64x24CM
5'5 - 170x75x24CM
6'0 - 180x85x24CM
Weight. 2.7KG
Colors. BLACK



BIGGIE 160L
Ref. 22203-0205
Sizes. 92 x 58 x 34CM
Weight. 2.15KG
Colors. SLATE - CREME



MAST COVER
Ref. 22223-0301
Sizes. 65 / 75 / 85 / 105MM
Colors. SLATE



STAB SLEEVE
Ref. 22223-0302
Sizes. Span 50 - 53x17CM
Weight. 1.15KG
Colors. SLATE



FW SLEEVE
Ref. 22223-0303
Sizes. Span 70 - 70x25CM
Span 80 - 80x18CM
Span 90 - 90x23CM
Span 95 - 95x29CM
Span 115 - 115x29CM
Weight. 1.45KG
Colors. SLATE



DUFFLE BAG 45L
Ref. 22233-0401
Sizes. 65 x 30 x 24CM
Colors. BLACK



DAY BAG 30L
Ref. 22233-0402
Sizes. 73 (53 rolled) x 31 x 19CM
Colors. BLACK

Travelbags.



747 WHEELS

150X32X47CM /

DETAILS

REF.	22233-0203
SIZING.	150x32x47CM
WEIGHT.	4.7KG
COLORS.	BLACK

FEATURES

- Premium 600D Polyester fabric
- Upper waterproof pocket
- High quality wheels
- Inside mesh pockets
- 4 reinforced handles
- Inside tightening straps
- 8mm protection foam
- Bottom reinforcement
- 10mm High density protection foam
- Inside stiff separation board



FEATURES



747 WHEELS

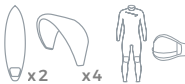
175X30X54CM / 190X30X54CM / 220X30X60CM

DETAILS

REF.	22233-0203
SIZING.	175x30x54CM / 190x30x54CM / 220x30x60CM
WEIGHT.	5.5KG
COLORS.	BLACK

FEATURES

- Premium 600D Polyester fabric
- Upper waterproof pocket
- High quality wheels
- Inside mesh pockets
- 4 reinforced handles
- Inside tightening straps
- 8mm protection foam
- Bottom reinforcement
- 10mm High density protection foam
- Inside stiff separation board



FOIL WHEELS

5'0 / 5'5 / 6'0
160X64X24CM / 170X75X24CM / 180X85X24CM

DETAILS

REF.	22233-0206
SIZING.	5'0 - 160x64x24CM / 5'5 - 170x75x24CM / 6'0 - 180x85x24CM
WEIGHT.	2.7KG
COLORS.	BLACK

FEATURES

- Premium 600D Polyester fabric
- Zip area
- Removable inside layer protect
- Four side handles
- 10mm High density protection foam
- Inside stiff separation board



BIGGIE

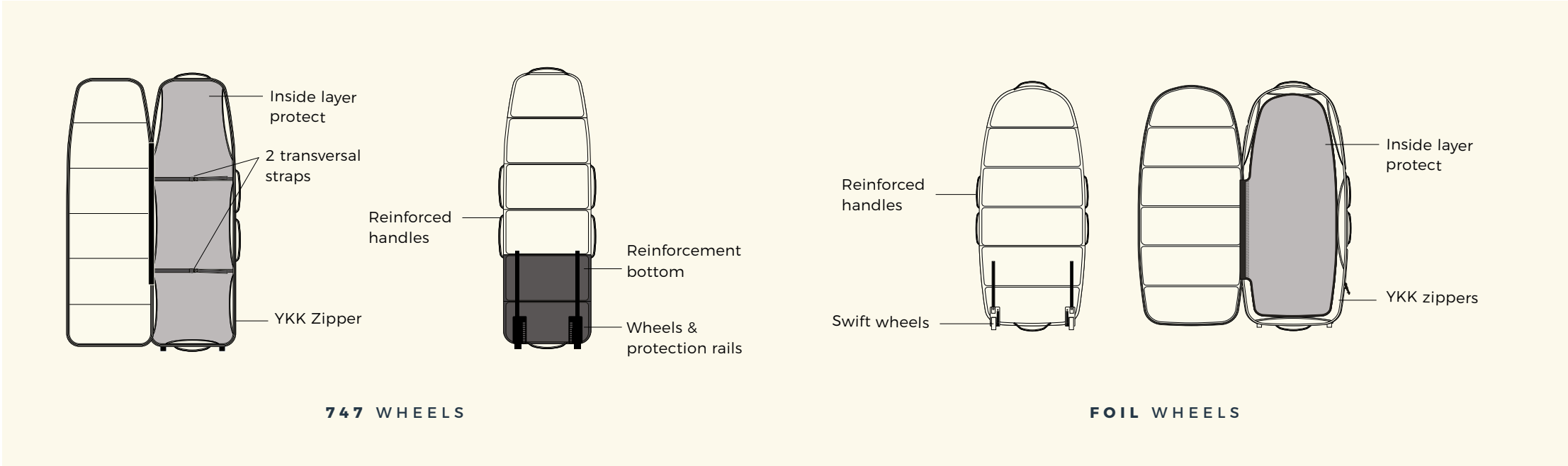
160L - 92X58X34CM

DETAILS

REF.	22233-0206
SIZING.	160L - 92x58x34CM
WEIGHT.	3.15KG
COLORS.	BLACK

FEATURES

- Premium 600D Polyester fabric
- Straps reinforcements + aluminium tension hooks
- 6 reinforced handles
- 1 mesh pocket
- 1 accessories pocket



747 WHEELS

FOIL WHEELS

Daybags.



SURF

5'3 / 5'6 / 6'0
163X53CM / 175X54CM / 188X58CM

DETAILS

REF.	22223-0104 / 22223-0105 22223-0106
SIZING.	5'3 -163x53CM / 5'6 -174x54CM 6'0 -188x58CM
WEIGHT.	1.2KG
COLORS.	SLATE

FEATURES

- Premium 600D Polyester fabric
- Velcro pocket
- One side handle
- Sleeve roll = Velcro closure, no zipper



TWIN-TIP

145X50CM - 1KG

DETAILS

REF.	22223-0101
SIZING.	5'0 -145x50CM
WEIGHT.	1KG
COLORS.	SLATE

FEATURES

- Premium 600D Polyester fabric
- Velcro pocket
- One side handle
- Sleeve roll = Velcro closure, no zipper



SURF

6'5 / 7'2
170X55CM / 180X60CM

DETAILS

REF.	22223-0107 / 22223-0108
SIZING.	6'5 -200x60cm / 7'2 -220x66CM
WEIGHT.	1.2KG
COLORS.	SLATE

FEATURES

- Premium 600D Polyester fabric
- Velcro pocket
- One side handle
- Sleeve roll = Velcro closure, no zipper



KITE FOIL

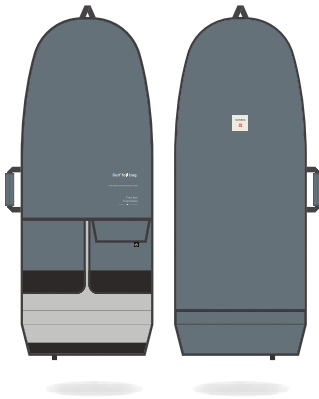
130X50CM/145X60CM

DETAILS

REF.	22223-0102 / 22223-0103
SIZING.	4'4 -130x50CM / 5'0 -145x60CM
WEIGHT.	1KG
COLORS.	SLATE

FEATURES

- Premium 600D Polyester fabric
- Velcro pocket
- One side handle
- Sleeve roll = Velcro closure, no zipper



SURF FOIL

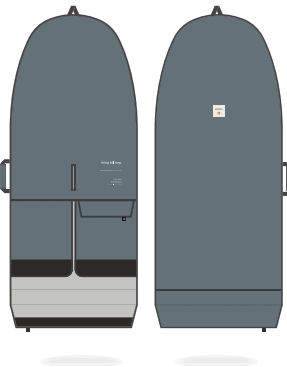
4'4 / 4'8
135X60CM / 145X65CM

DETAILS

REF.	22223-0109 / 22223-0110
SIZING.	4'4 -135x60cm / 4'8 -145x65CM
WEIGHT.	1KG
COLORS.	SLATE

FEATURES

- Premium 600D Polyester fabric
- Velcro pocket
- One side handle
- Sleeve roll = Velcro closure, no zipper



WING

5'0 / 5'5 / 6'0
156X70CM / 170X75CM / 185X85CM

DETAILS

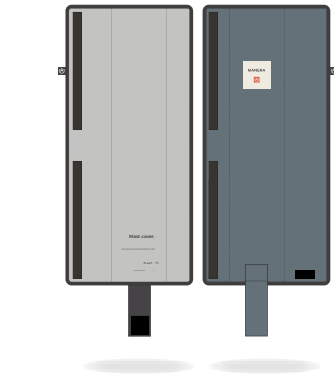
REF.	22223-0111 / 22223-0112 22223-0113
SIZING.	5'0 -156x70CM / 5'5 -170x75CM 6'0 -185x85CM
WEIGHT.	1KG
COLORS.	SLATE

FEATURES

- Premium 600D Polyester fabric
- Velcro pocket
- One side handle
- Sleeve roll = Velcro closure, no zipper

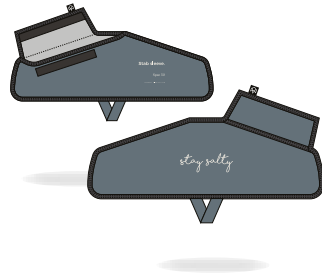


Foilbags.



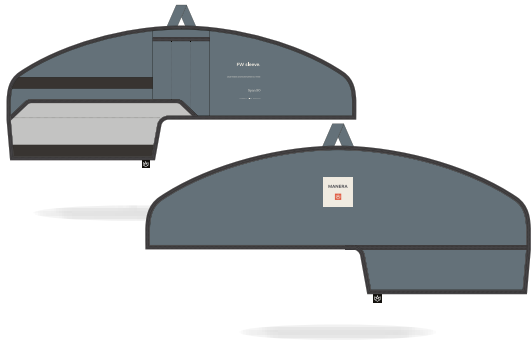
MAST COVER
65 / 75 / 85 / 105MM

DETAILS	
REF.	22223-0301
SIZING.	65 / 75 / 85 / 105MM
COLORS.	SLATE
FEATURES	
<ul style="list-style-type: none">• Premium 600D Polyester fabric• High density foam protection• Velcro closure	



STAB SLEEVE
SPAN 50

DETAILS	
REF.	22223-0302
SIZING.	Span 50 -53x17MM
COLORS.	SLATE
FEATURES	
<ul style="list-style-type: none">• Premium 600D Polyester fabric• High density foam protection• Velcro closure	

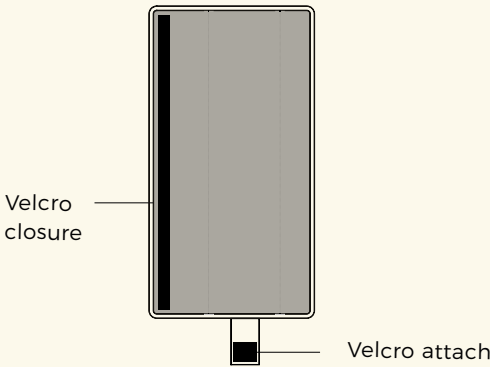


FW SLEEVE
SPAN 70 / 80 / 90 / 95 / 105

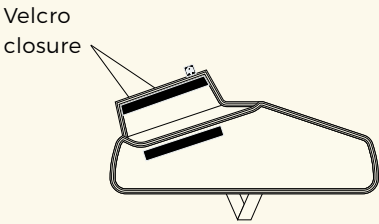
DETAILS	
REF.	22223-0303
SIZING.	Span 70 -70x25MM Span 80 -80x18CM / Span 90 -90x23CM Span 95 -95x29CM / Span 115 -115x29CM
COLORS.	SLATE
FEATURES	
<ul style="list-style-type: none">• Premium 600D Polyester fabric• High density foam protection• Inside reinforcements	



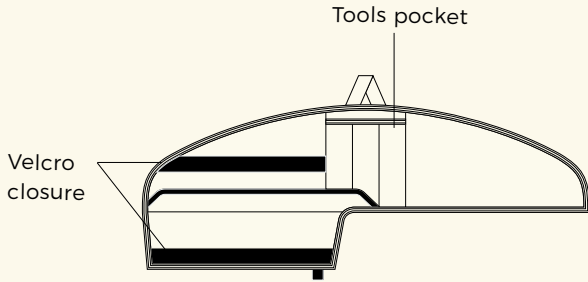
BACK FEATURES



MAST COVER



STAB COVER



FW SLEEVE

Backpacks.



RUGGED DRY DUFFLE

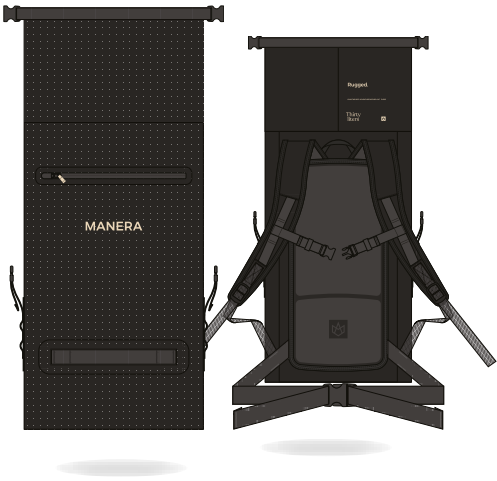
45 L
65 X 30 X 23 CM

DETAILS

REF.	22233-0401
SIZING.	45L - 65x30x23CM
COLORS.	BLACK

FEATURES

- Premium coated Polyester material
- Removable backpack straps
- 1 side expandable pocket
- 1 outside pocket
- 2 inside mesh pockets
- WARNING : 45L Fabric is waterproof but zipper is not.



RUGGED DRY BAG

30 L
73 - (53 ROLLED) X 31 X 19 CM

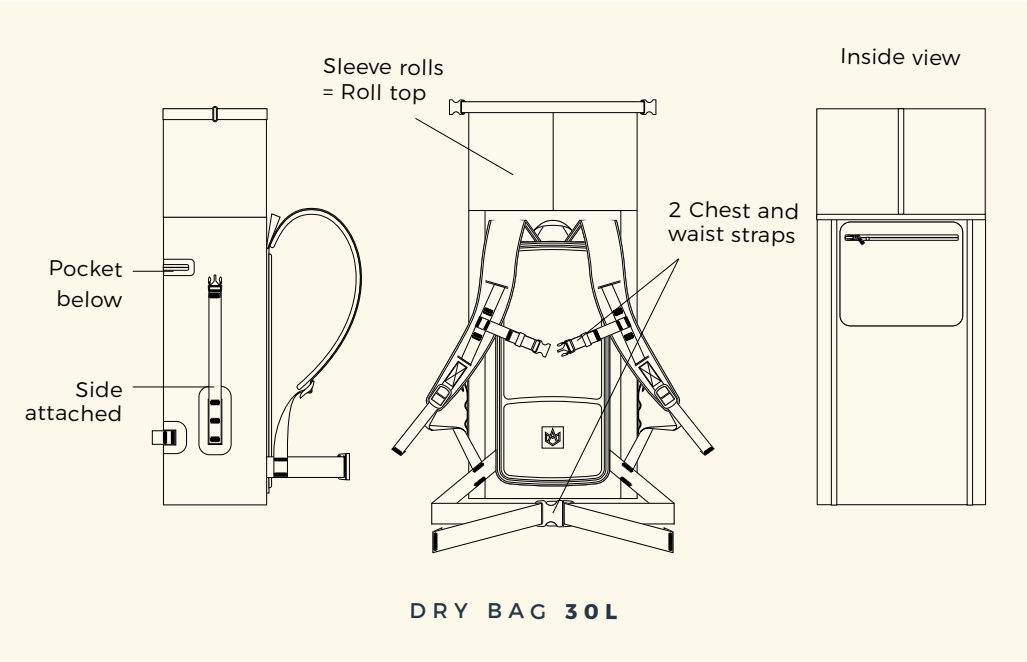
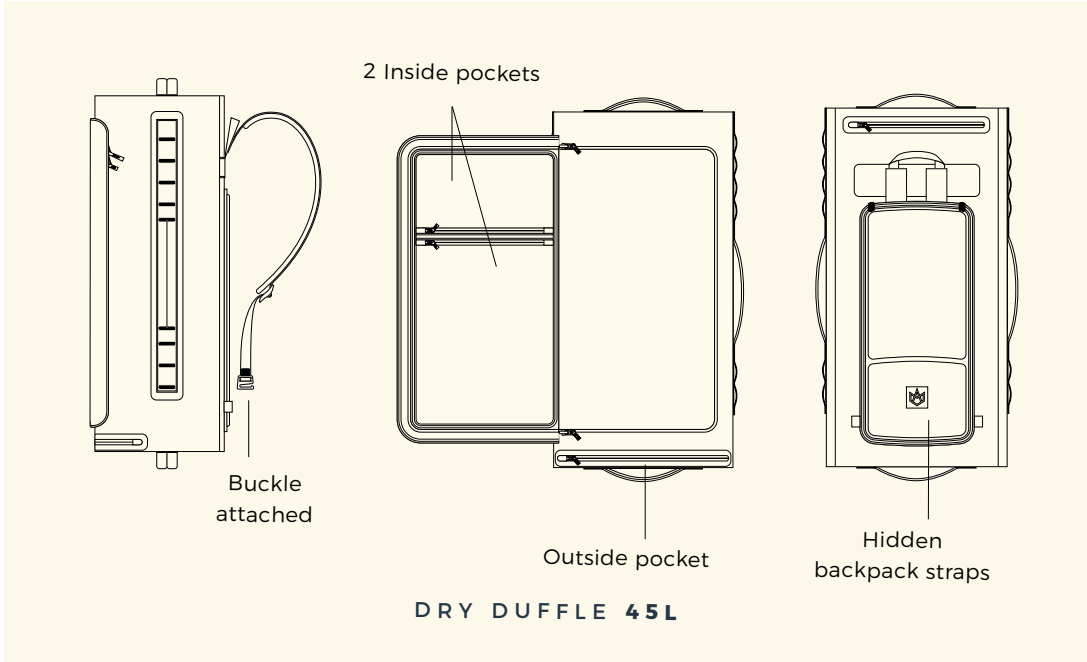
DETAILS

REF.	22233-0402
SIZING.	30L - 73-(53 rolled)x31x19CM
COLORS.	BLACK

FEATURES

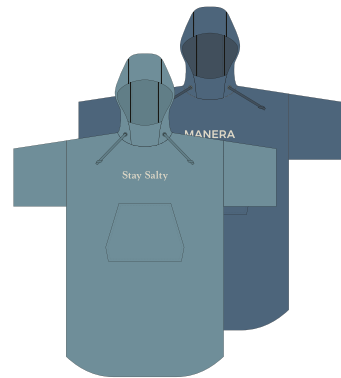
- Premium coated Polyester material
- Mesh shoulder straps
- 1 outside pocket
- 1 inside mesh pocket
- Computer pocket
- WARNING : Bag and pocket zipper are waterproof.

FEATURES

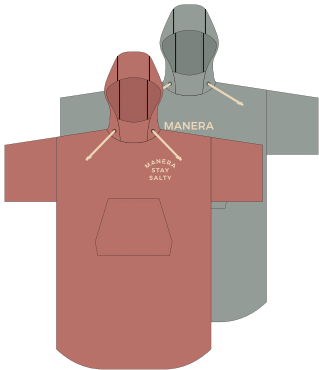


WATERWEAR & PROTECTIONS

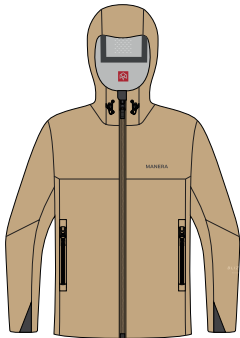
OVERVIEW



BAMBOO PONCHO
WINTER
Ref. 22236-0300
Sizes. ONE SIZE
Colors. SMOKE BLUE / TEAL



BAMBOO PONCHO
SUMMER
Ref. 22216-0301
Sizes. ONE SIZE
Colors. BRICK / SEAGREEN



NEW **BLIZZARD JACKET**
Ref. 22235-0300
Sizes. S-M-L-XL-XXL
Colors. ALMOND



NEW **WETSHIRTS LS**
Ref. 22235-0900 / 22235-0800
Sizes. XS-S-M-L-XL
Colors. SEA STORM / TRADEWINDS



NEW **WETSHIRT SS**
Ref. 22235-1000
Sizes. XS-S-M-L-XL
Colors. SEA STORM



NEW **BOBBY**
Ref. 22236-0600
Sizes. XS-S-M-L-XL
Colors. BLUEBERRY / MONUMENT



NEW **SFOAM HELMET**
Ref. 22205-0300
Sizes. S-M-L
Colors. BLACK



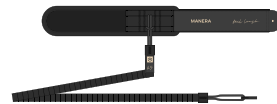
BOOM VEST
Ref. 22205-0100
Sizes. S-M-L-XL
Colors. SLATE BLACK - ALLOY
BLUE / BLACK



X10D VEST
Ref. 22205-0200
Sizes. S-M-L-XL
Colors. INK BLUE / BLACK



NEW **LEASH BELT**
Ref. 22236-0201
Sizes. S-M-L
Colors. BLACK



NEW **LEASH FOIL**
Ref. 22236-0202
Sizes. 4'5 / 5'5
Colors. BLACK



Waterwear.

3
2
0
2



The Essentials



NEW

BLIZZARD JACKET
WINDSHELL

DETAILS

REF.

22235-0300

SIZING.

S-M-L-XL-XXL

COLORS.

ALMOND

FEATURES

- 3 layers vest
- Light, waterproof & windproof
- Spreaderbar passes through the 2 side pockets
- Breathability to go SUPing, biking, or wear it in the street

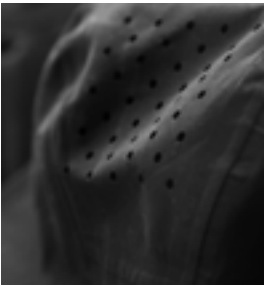
TECHNOS



Harness insert



8mm heavy duty nylon YKK zippers



Big holes in the hood to evacuate water



Easy hand entry

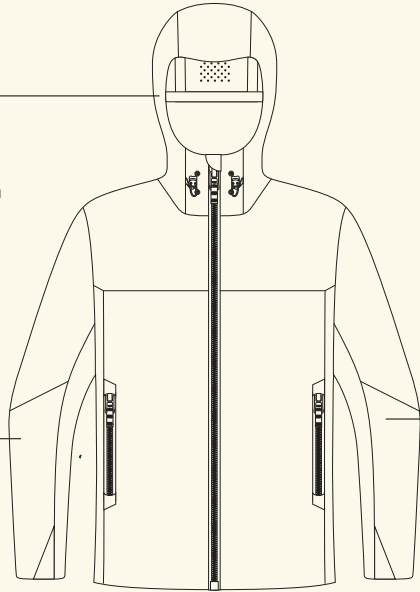
FEATURES

WIND STOPPER

The 3 laminated layers are working like a hedge to cut the wind and protect the body from cold gusts.

WATER REPELLENT

The pores in our internal membrane are not big enough to let water drops pass through.

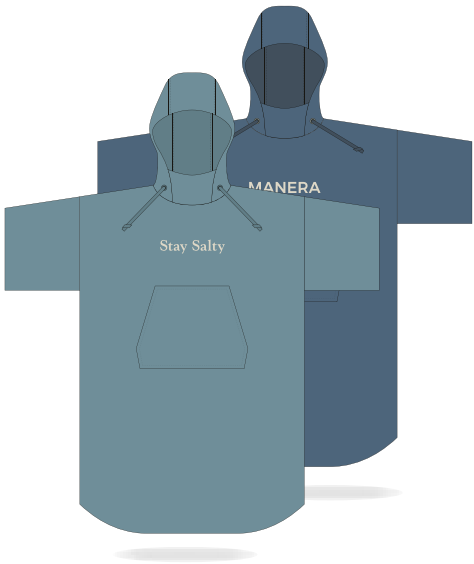


The Blizzard jacket creates a cocoon around the Kiter that allows a far better resistance to cold even with a standard wetsuit.

Whether you are on the water or debriefing the session on the beach, the Blizzard will keep you warm & comfy.

BREATHABLE

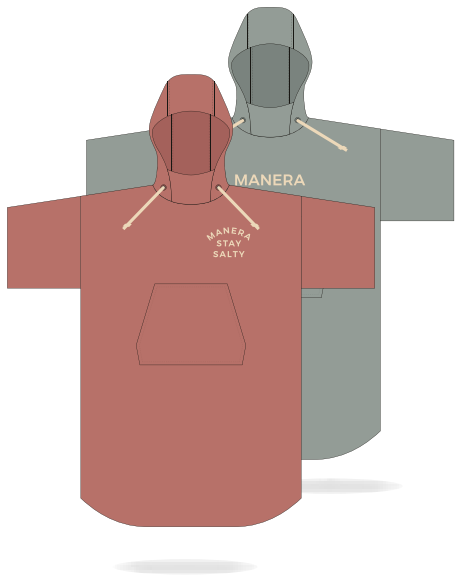
Thanks to its micro-perforated internal membrane, the jacket evacuates moisture and prevents the body from being wet.



NEW

BAMBOO PONCHO
WINTER

DETAILS	
REF.	22236-0300
SIZING.	ONE SIZE
WEIGHT.	550G
COLORS.	SMOKE BLUE / TEAL



BAMBOO PONCHO
SUMMER

DETAILS	
REF.	22216-0301
SIZING.	ONE SIZE
WEIGHT.	350G
COLORS.	BRICK / SEAGREEN



NEW

WETSHIRTS LS & SS
SUNSHELL

DETAILS	
REF.	22235-0800 / 22235-0900
SIZING.	XS-S-M-L-XL
COLORS.	SEA STORM / TRADEWINDS
COMPOSITION.	86% POLYESTER 14% SPANDEX

- | FEATURES | |
|---------------|-----------------|
| • Fast drying | • Hyper stretch |
| • Windproof | • Teeshirt fit |



NEW

WETSHIRT SS
SUNSHELL

DETAILS	
REF.	22235-1000
SIZING.	XS-S-M-L-XL
COLORS.	SEA STORM
COMPOSITION.	86% POLYESTER 14% SPANDEX

- | FEATURES | |
|-----------------|----------------|
| • Fast drying | • Teeshirt fit |
| • Hyper stretch | |



NEW

BOBBY

2.0
mm

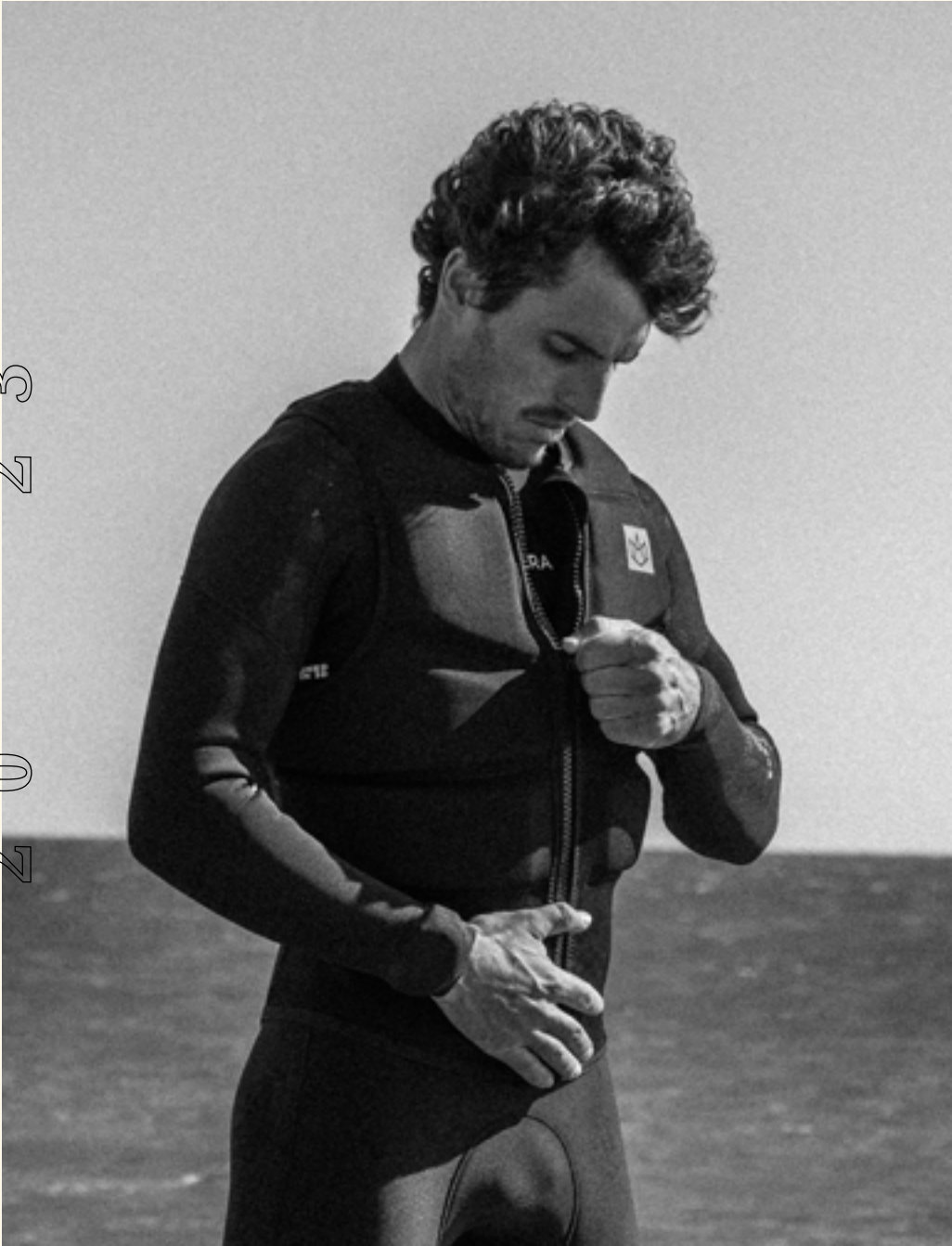
DETAILS	
REF.	22236-0600
SIZING.	S-L
COLORS.	BLUEBERRY / MONUMENT

- | FEATURES | |
|-----------------|--|
| • Polyester 93% | |
| • Elastane 7% | |





Protections.



The Essentials

3
2
0
2



BOOM VEST IMPACT VEST

DETAILS

REF.	22205-0100
SIZING.	S-M-L-XL
COLORS.	SLATE BLACK - ALLOY BLUE / BLACK

FEATURES

- Shot gum foam
- Hyper stretch - X10D jersey
- Harness zone
- Anti-slip
- Zipper closure



X10D VEST IMPACT VEST

DETAILS

REF.	22205-0200
SIZING.	S-M-L-XL
COLORS.	INK BLUE / BLACK

FEATURES

- Shot gum foam
- Hyper stretch - X10D jersey
- Harness zone
- Anti-slip



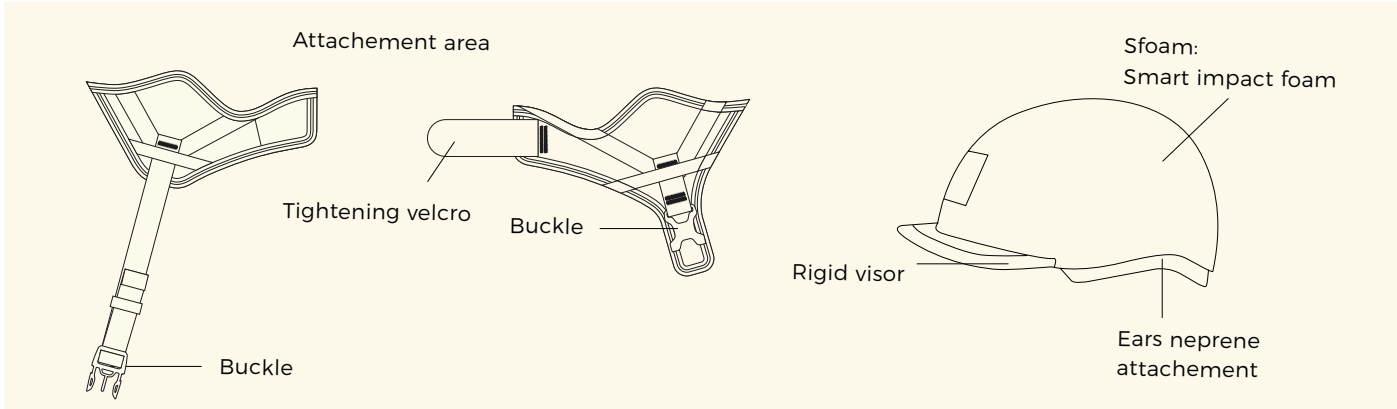
NEW

SFOAM HELMET PROTECTION

DETAILS

REF.	22225-0300
SIZING.	S-M-L
COLORS.	BLACK

FEATURES





Leashs.



3
2
0
2

The Essentials



NEW

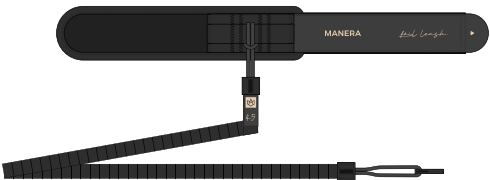
LEASH BELT

DETAILS

REF.	22236-0201
SIZING.	S-M-L
COLORS.	BLACK

FEATURES

- Belt leash attachment
- High resistance
- Attachement on both sides + middle.



NEW

FOIL LEASH

DETAILS

REF.	22236-0202
SIZING.	4'5 / 5'5
COLORS.	BLACK

FEATURES

- Short lenght leash
- Flatter rope = No problem to step on
- Can be easily switched from surfoil to wingfoil board.



GAMBAS BOARDSHORT

HAAPITI BOARDSHORT

BOARDSHORTS

OVERVIEW



BLUEBERRY



MONUMENT

GAMBAS
Ref. 22234-0301
Sizes. 28-30-31-32-33-34-36
Colors. BLUEBERRY / MONUMENT



ANTHRACITE



JUNGLE

SQUAREFLEX
Ref. 22224-0100
Sizes. 28-30-31-32-33-34-36
Colors. ANTHRACITE / JUNGLE



MIDNIGHT NAVY



LONDON FOG

HAAPITI MEN
Ref. 22224-0200
Sizes. 28-30-31-32-33-34-36
Colors. MIDNIGHT NAVY / LONFON FOG



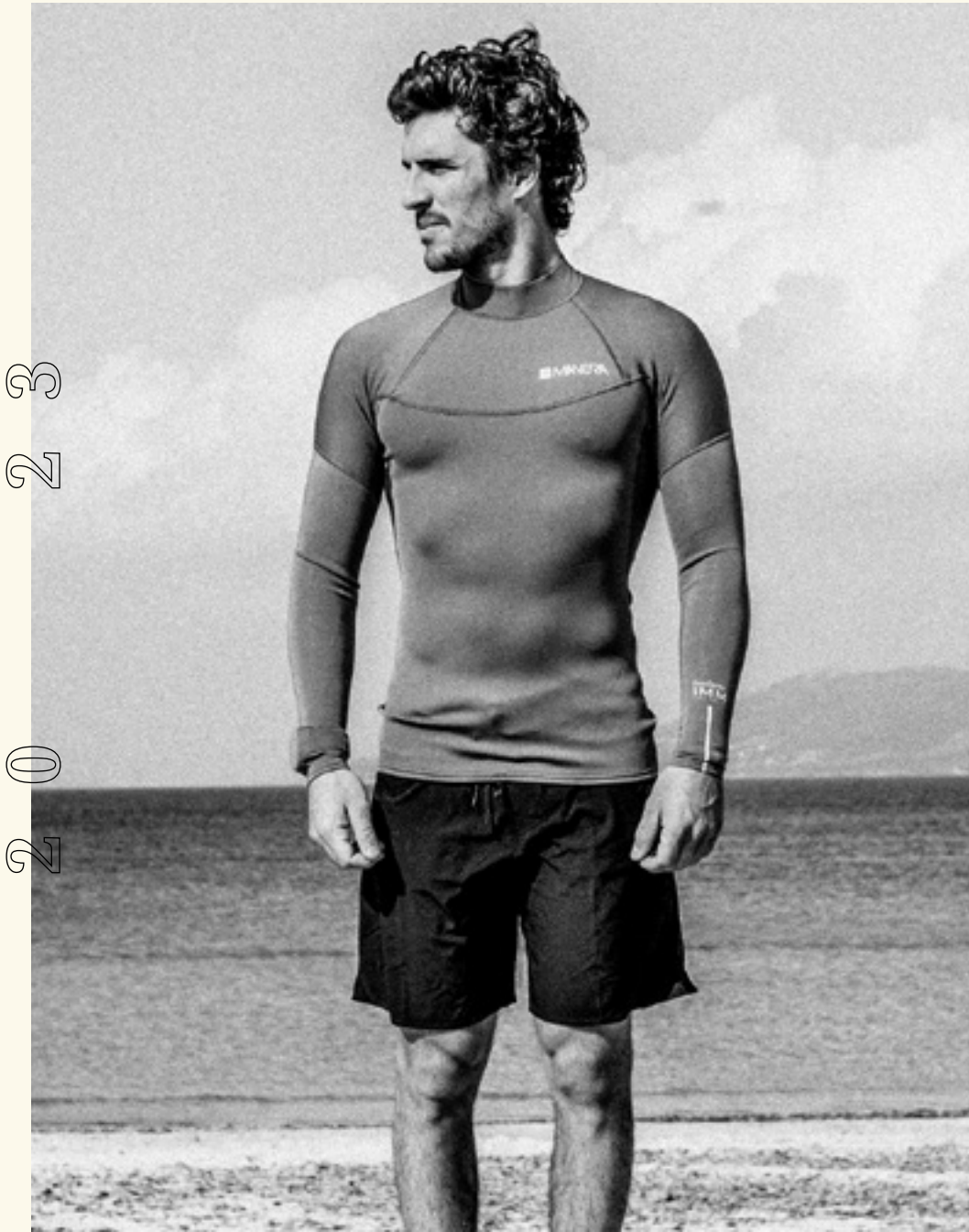
BLACK

NEW **HAAPITI WOMEN**
Ref. 22224-0100
Sizes. 34-36-38-40-42
Colors. BLACK

SQUAREFLEX BOARDSHORT



Boardshorts.



Style & performance

BLUEBERRY



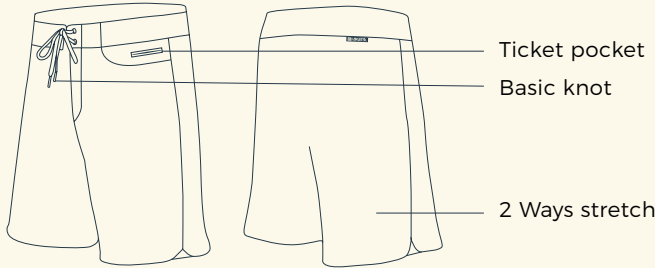
MONUMENT



GAMBAS BOARDSHORT

DETAILS	
REF.	22234-0301
SIZING.	28-30-31-32-33-34-36
COLORS.	BLUEBERRY / MONUMENT
- LENGHT 18" -	

FEATURES



MIDNIGHT NAVY



LONDON FOG



HAAPITI BOARDSHORT
MEN

DETAILS

REF.	22224-0200
SIZING.	28-30-31-32-33-34-36
COLORS.	MIDNIGHT NAVY / LONDON FOG
- LENGHT 19" -	

BLACK



NEW

HAAPITI BOARDSHORT
WOMEN

DETAILS

REF.	22224-2000
SIZING.	34-36-38-40-42
COLORS.	BLACK

ANTHRACITE



SQUAREFLEX BOARDSHORT

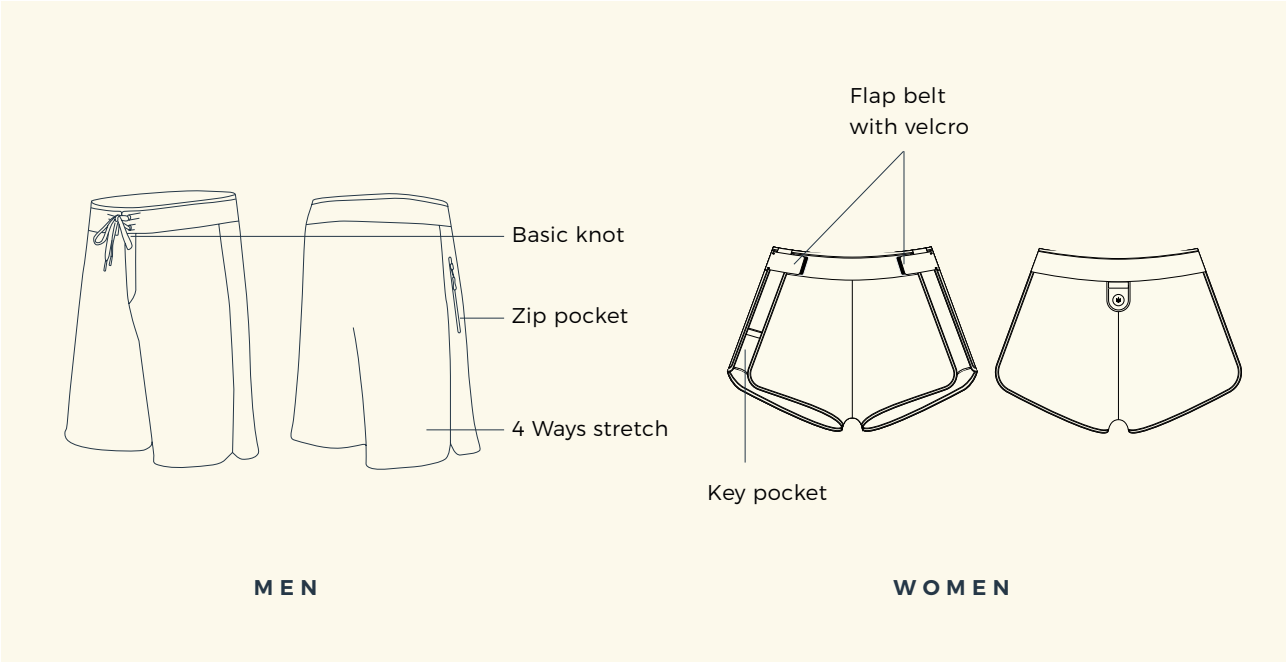
DETAILS

REF.	22224-0100
SIZING.	28-30-31-32-33-34-36
COLORS.	ANTHRACITE/ JUNGLE
- LENGHT 19" -	

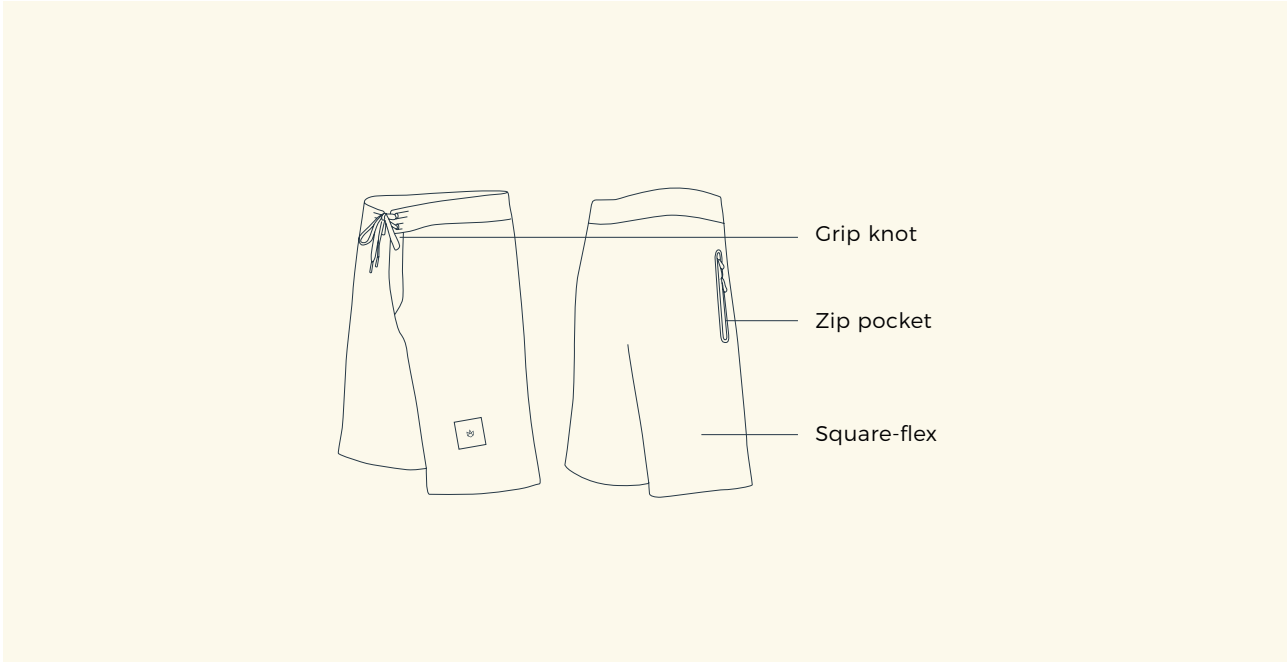
JUNGLE



FEATURES



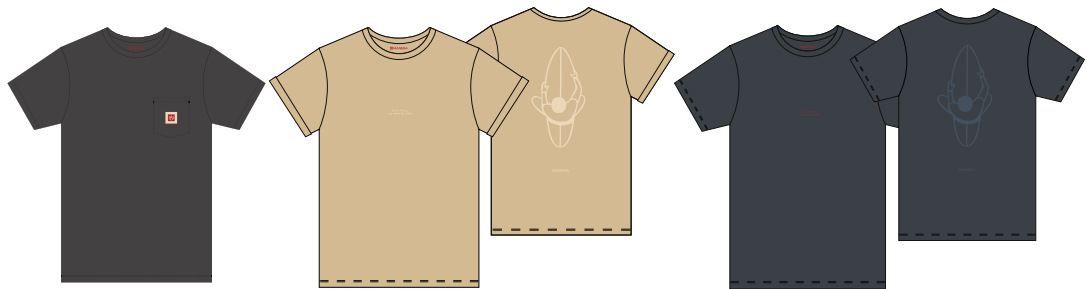
FEATURES



APPAREL

OVERVIEW

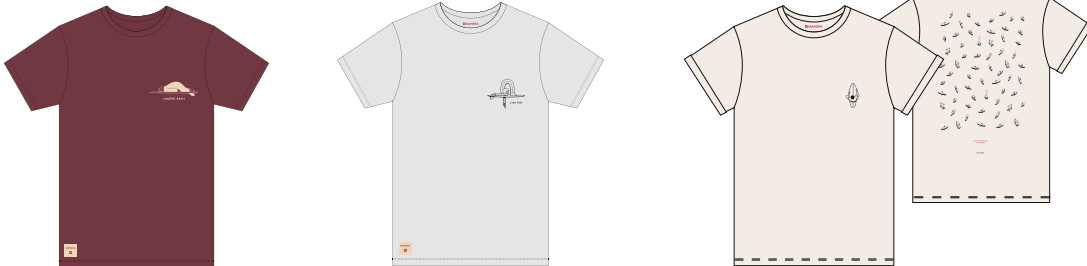
NEW



ANTHRACITE

ALMOND

SALTY



WINE

HEATHER GREY

TOFU

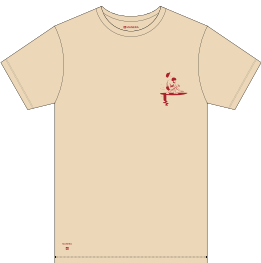
MEN T-SHIRT

Ref. 22237-0100

Colors. ANTHRACITE / ALMOND / SALTY / WINE / HEATHER GREY / TOFU / SAND

Sizes XS-S-M-L-XL

Composition.
Recycled polyester 40%
Organic cotton 60%



SAND



FLEECE

Ref. 22237-0200

Colors. ALMOND / ANTHRACITE

Sizes XS-S-M-L-XL

Composition.
Recycled polyester



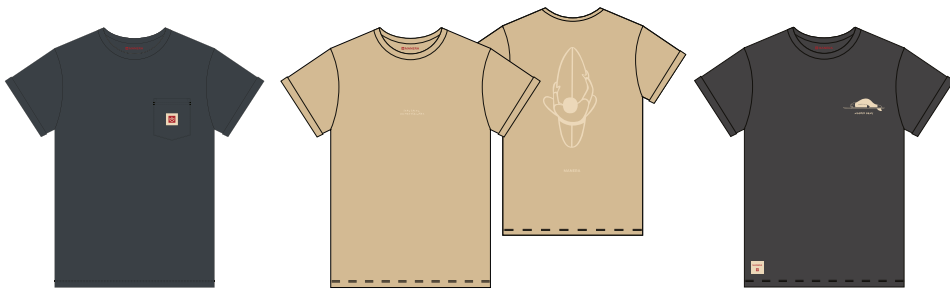
RAIN JACKET

Ref. 22225-0500

Colors. TRADEWINDS

Sizes XS-S-M-L-XL-XXL

Features
. 100% waterproof/windproof PVC
. Double flap inside pockets
. Neoprene sleeves



SAILOR

ALMOND

ANTHRACITE

WOMEN T-SHIRT

Ref. 22237-1000

Colors. SAILOR / ALMOND / ANTHRACITE / TOFU

Sizes XS-S-M-L-XL

Composition.
Recycled polyester 40%
Organic cotton 60%



TOFU



ALMOND / Corduroy

SAILOR / Cotton

PEWTER / Cotton



OLIVE / Corduroy

WINE / Cotton

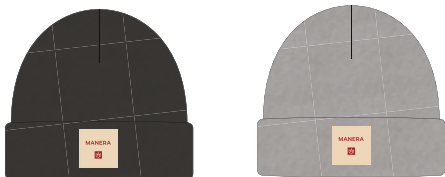
BLACK / Cotton

CAPS

Ref. 22226-0500

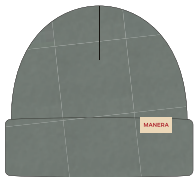
Colors. ALMOND / SAILOR / PEWTER / OLIVE / WINE / BLACK

Composition.
Cotton / Wool flanel



ANTHRACITE

GREY



SEAGREEN

BEANIES

Ref. 22237-1100

Colors. ANTHRACITE / GREY / SEAGREEN

Composition.
Cotton



**BECAUSE WE BELIEVE
EVERY MOMENT OUT THERE
SHOULD BE A GREAT ONE.**

MANERA is a French family-business which develops high-quality watersports gear.

Our passion is to put innovation and creation at the service of our pleasure in the ocean.

We drive our business with high requirements and loyalty. Thus, we only offer high-quality products through a network of trusted, specialized shops.

MANERA was founded so that we could make the most of the time we spend on the water, without getting cold or feeling uncomfortable. We've got your back in the storm and we make sure you can remain there until you've had enough fun.

Julien Salles

stay

family.



F-ONE SAS

ZAC de la Méditerranée
170, Route de la Foire
34470 PÉROLS - FRANCE

Tél. +33 (0) 4 67 99 51 16
Fax. +33 (0) 4 67 99 61 93

WWW.MANERA.COM

